

INSTALLATION INSTRUCTIONS

MyGlassTruck.com
Division of Demountable Concepts, Inc

Aluminum Pick-Up Rack Installation



MyGlassTruck.Com
Demountable Concepts, Inc.
200 Acorn Rd.
Glassboro, NJ 08028
800.254.3643
856.863.0900
856.863.6704
sales@myglasstruck.com
www.myglasstruck.com

toll free
local
fax
email
web

Installation Instructions

ATTENTION:

The success or failure of this equipment could very well depend on a thorough and proper installation. Any missed steps or improper procedures could result in serious injury or death to the installer or end user. Read and understand the contents of these instructions before proceeding.

IMPORTANT:

When installed, this Glass Rack must not alter or prevent vehicle compliance to any existing state or federal standards. Each vehicle manufacturer's recommendations should be consulted for compliance.

NOTE TO INSTALLER

Prior to installation read the entire Instruction guide and all of the Installation Instructions to familiarize yourself with this system.

INSTALLATION INSTRUCTIONS

INTRODUCTION

EVEN THOUGH THE FOLLOWING GOES WITHOUT SAYING, WE FEEL COMPELLED TO STATE . . .

This Glass Rack system should only be installed by those with sufficient basic skills to understand the installation and operation of glass carrying equipment, along with the equipment on which these systems are installed. These installation instructions are not intended to give rationale for all of the instructions that are given; however, it is the intent of these instructions to give the installer both the operations and what we believe to be the most desirable sequence of implementing these operations. These instructions can in no way expand into an area where they will replace a qualified person, or clear thinking, common sense and a basic knowledge that must be possessed by the installer.

We urge the installer (or anyone else) to call us if they have any questions. We have qualified personnel at our Glassboro, New Jersey plant to answer any questions that you may have. A detailed discussion on the telephone is far more satisfactory and productive than a detailed written explanation.

It has been our experience that a knowledgeable journeyman following these installation instructions and observing the operation of the Glass Carrying System will have sufficient comprehension to enable this person to troubleshoot and correct all normal problems that may be encountered. However, again we urge you to call us at our Glassboro, New Jersey plant if you find any problems during installation or have any doubts or questions.

MyGlassTruck.com

Demountable Concepts, Inc.

200 Acorn Road

Glassboro, NJ 08028

800.254.3643

856.863.0900

856.863.6704

sales@MyGlassTruck.com Email

www.MyGlassTruck.com

Toll Free

Phone

Fax

Web

Required tools: Electric Drill or Cordless, 5/16 & 3/8" drill bits, 9/16 and 1/2" sockets and wrenches, impact gun not needed but highly suggested.

Installation Instructions

Use Bag V-1 Hardware for this next part. See part list on last page for all available parts involved.

Find the front of the rack, identified by the holes where the front body stop will

Place the rack up on the bed rail. Use clamps to hold in place to the top of bed rail. Use jack stands or wooden blocking to support the rack. Make sure the carrier does not interfere with any doors or fuel openings. Be sure your supports are strong enough to support the weight of the rack.





Place the other rack on the passenger-side. Use clamps to hold in place to top of bed rail. Use jack stands or wooden blocking to support the rack. Be sure your supports are strong enough to support the weight of the rack.

When clamping the passenger-side rack onto the truck frame, try to maintain 61 ½” between the aluminum bed pans and hold this number all the way back to the tailgate to make the rack square.

Set the angle of the carrier by moving the bottom in or out. Be sure to keep the rack as close to the truck as possible. If the rack is touching the truck, be sure to use a rubber or foam pad between the truck and the rack. Try to keep about ½” between the rack and the truck. A safe angle is about 5-6 degrees. Do not exceed the legal width limit of 102”

Top Cross Bars

Bolt the top cross bars into place at the front and rear of the glass rack. Use the 2 ½" x 3/8" bolts (x8), washers (x16), lock nuts (x8) provided. (Bag P-2 Hardware)

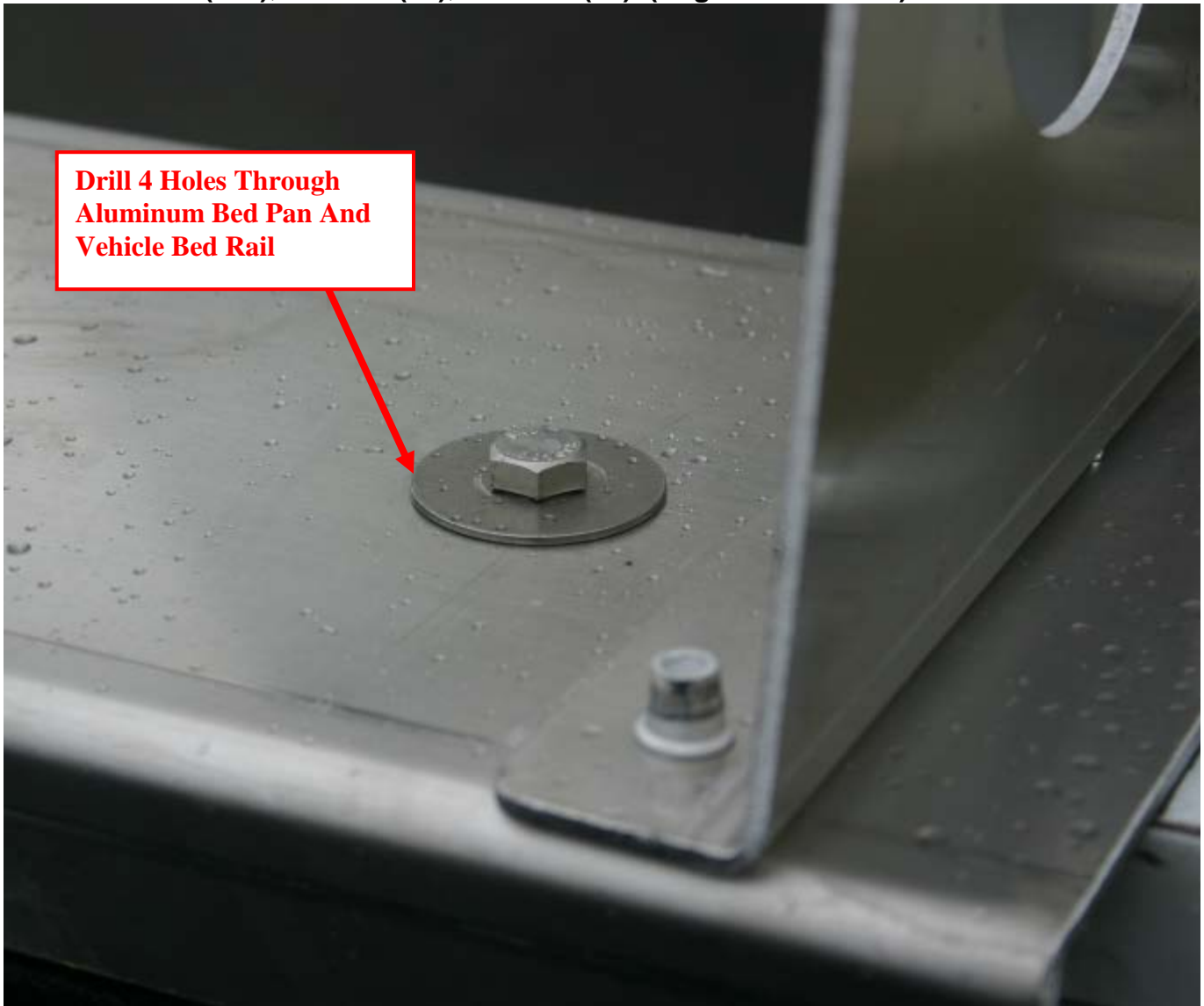
Make sure you bolt the cross bar that is meant to hold the 3 Cluster Bar Lights at the FRONT of the glass rack.



Securing Aluminum Bed Pan To Vehicle Bed Rail

Release the clamps that are holding the driver and passenger side racks to the bed rail. Double check one more time that the bed pans are still 61 ½” apart from each other all the way down the sides.

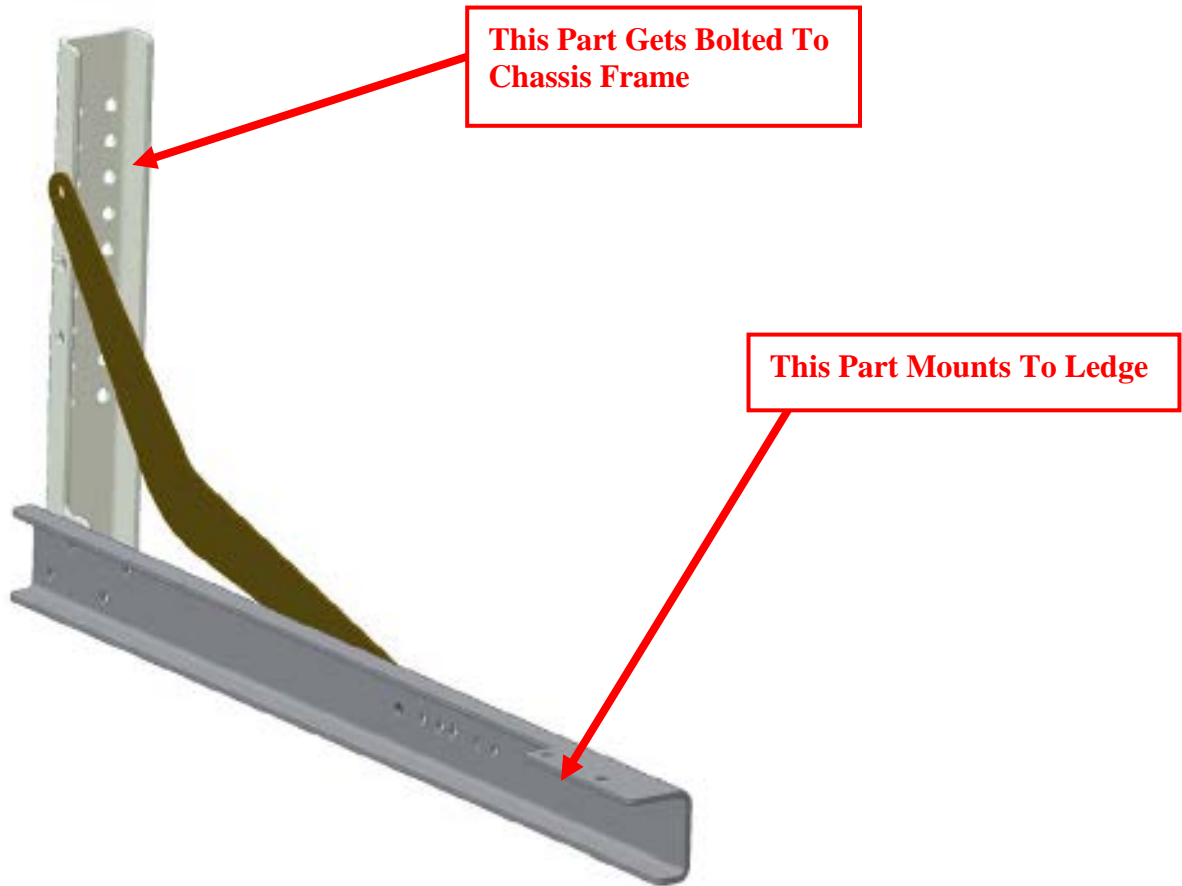
Drill 4 holes through each rack and through the bed rail. Secure with 1 ½” bolts x 3/8” (x8), fender washers (x16), washers (x8), lock nuts (x8). (Bag P-3 Hardware)



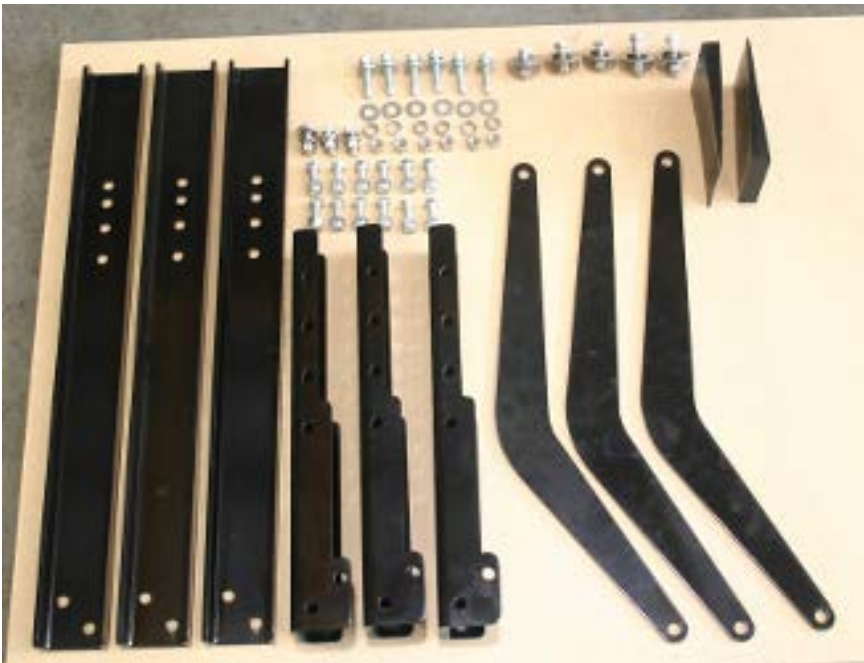
Under Body Mounts

Use Bag P-1 Hardware for this next part. See part list on last page for all available parts involved.

Using 3/8" x 1" bolts w/ locknuts (**x 16**), pre-assemble the under body mounting brackets. **(Bag P-1 Hardware)** These brackets are very strong and provide load carrying capacity. They will help support the load as well as stabilize the bottom of the rack from moving in and out.



Galvanized Steel UnderMounts



*****Please NOTE That UnderMounts Are NO LONGER PAINTED BLACK, But Galvanized Steel*****

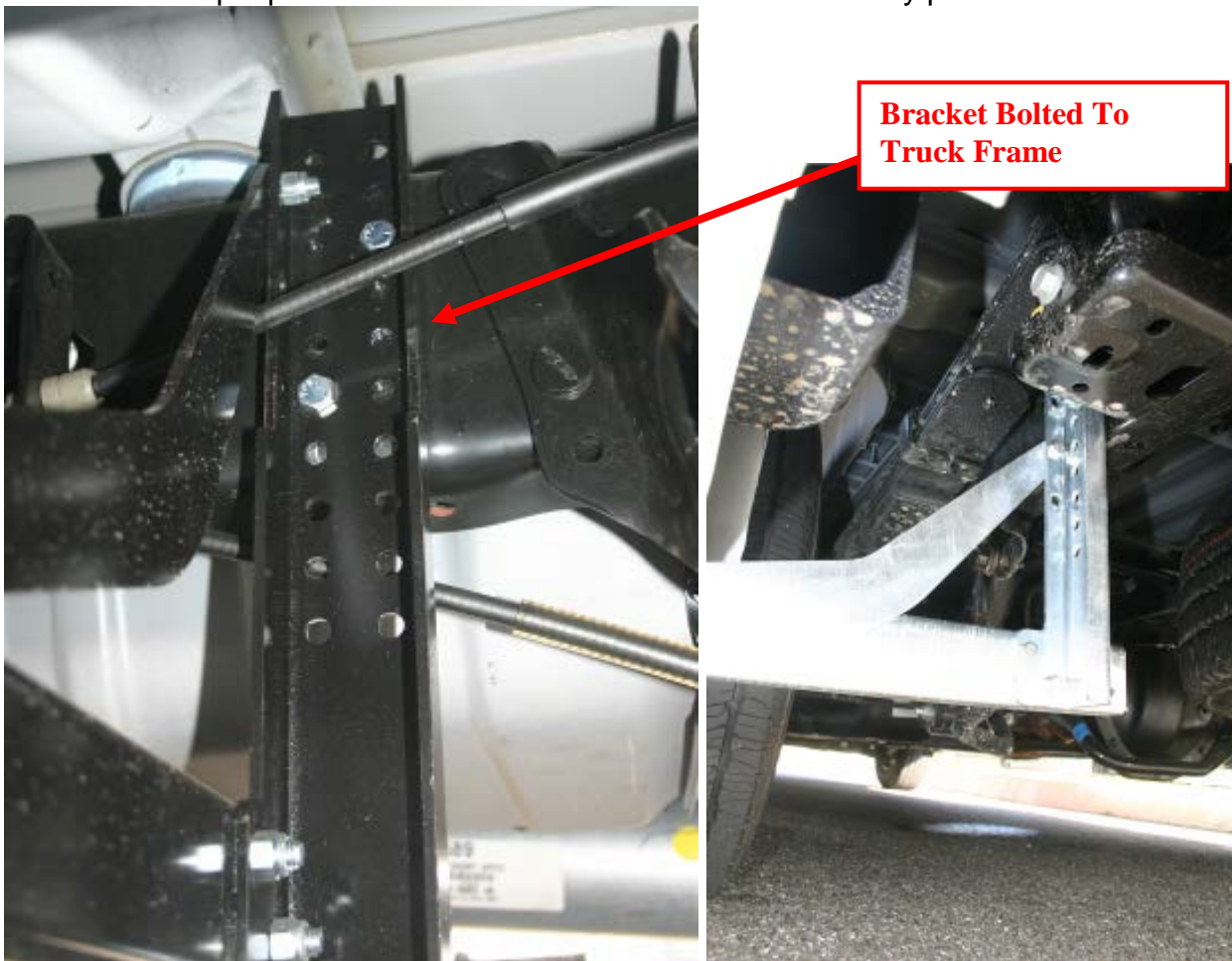
Locate the brackets on the chassis so the horizontal member meets the bottom of the rack angle. **Make sure under mounts do not interfere with anything on glass rack ledge.**

Be sure to use minimum of 2 bolts per bracket through the chassis frame. Get one bolt high and one bolt low on the truck frame. Be careful of brake lines, fuel tanks, fuel hoses etc. The brackets may have to be modified if you have interference. Call us if you are unsure.

Using self tapping 3/8" x 1 1/2" bolts w/ lock washers, & nuts (x 3), **(Bag P-1 Hardware)** bolt the mounting brackets to the truck frame with the long arm of the bracket under the ledge. **(These bolts are only used on the driver-side front mount ONLY)**

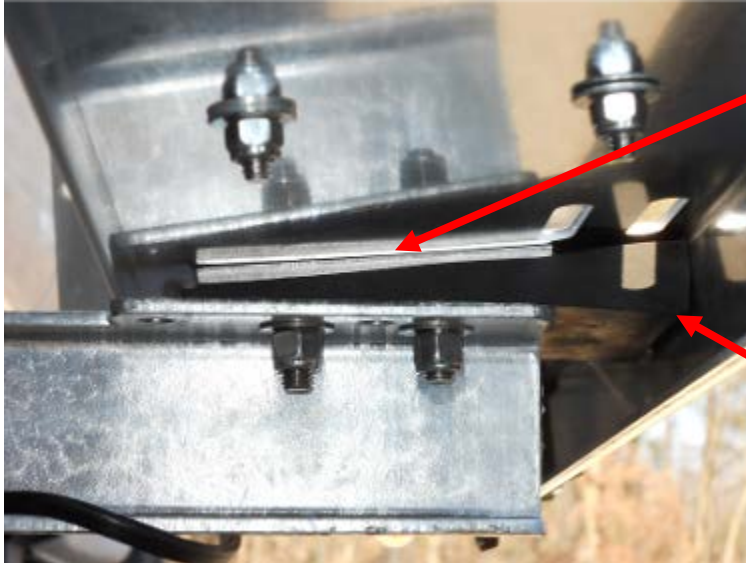
For the remaining 3 under body mounts, use the (x2) 1 1/2" x 3/8" bolts with (x2) lock nuts, (x2) washers (x2) nut. **(Bag P-1 Hardware)**

One (1) in front of the rear wheels and One (1) behind. The boomerang shaped support can be located in multiple positions to work around brake cables or body panels.



Secure all the bracket bolts.

Use our 4" x 4" aluminum wear plate between top of bracket and bottom of ledge.
(Shrink Wrapped Loose) If there is a gap between the under mount and the ledge, add provided shims to bridge the gap. **(Shrink Wrapped Loose)**



Aluminum Wear Plate

Rubber Shim

Using 3/8" x 1 1/2" w/ washers, nuts (**x 8**) drill through the ledge into the top of the mounting bracket. **(Bag P-1 Hardware)**



Make Sure To Watch Out For Ledge Blocks When Bolting UnderMounts To Ledge

Double-check all connections, all nuts and all bolts.

Notes for Customers with **NO removable wheel skirts**

If you did not order removable wheel skirts your rack has been designed to mount higher. This will allow you to change tires in case of a flat **(With a Floor Jack at your shop)**. Therefore we have provided some special steel adaptors to bolt between the under body brackets and the bottom of the ledge. The adaptors are 3" wide – 8" tall w/ a 3" angle.

Use the 1" x 3/8" **(x8)**, washers **(x16)**, lock nut **(x8)** provided to secure this angle. **(Bag P-4 Hardware)** **See Figure A & Figure B**

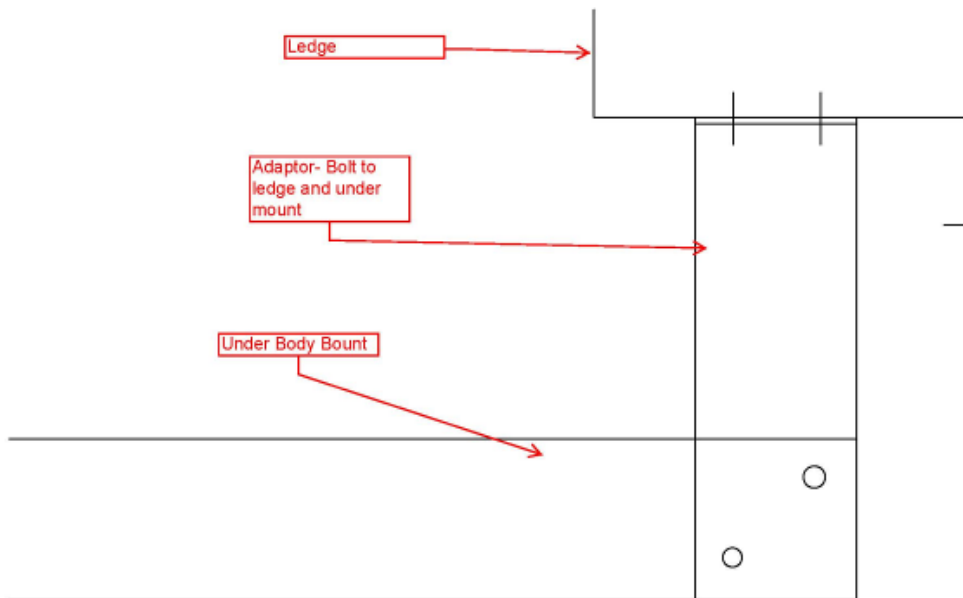
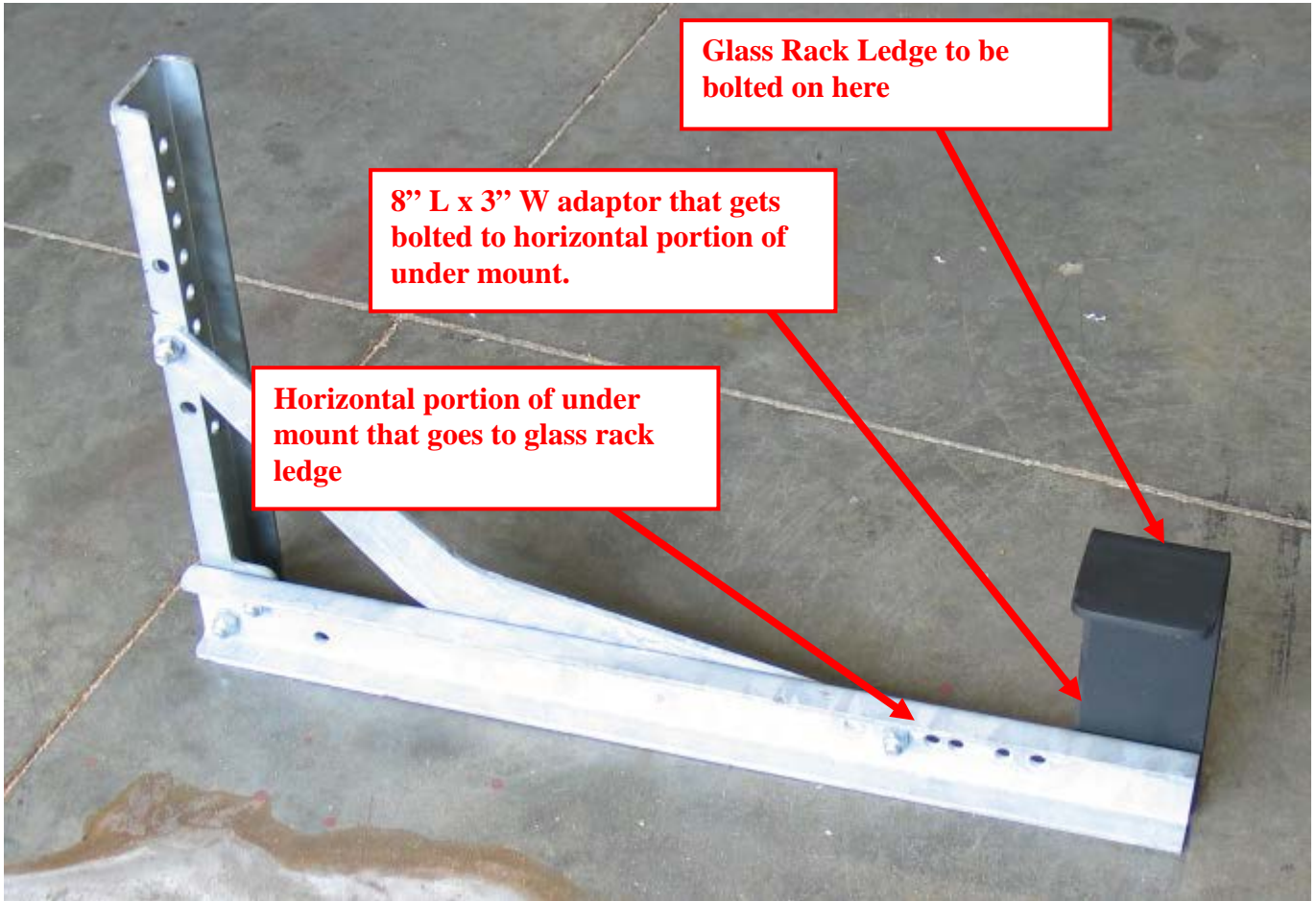


Figure A



Glass Rack Ledge to be bolted on here

8" L x 3" W adaptor that gets bolted to horizontal portion of under mount.

Horizontal portion of under mount that goes to glass rack ledge

Figure B

All vehicles over 80" wide require DOT approved lighting. This kit consists of 2 amber LED lights at the front, 2 red LED lights at the rear, a 3 cluster red ID light at the rear and a 3 cluster amber ID light at the front. **(Hardware placed in a bag and boxed up in crate)** We have provided wire and all connectors.

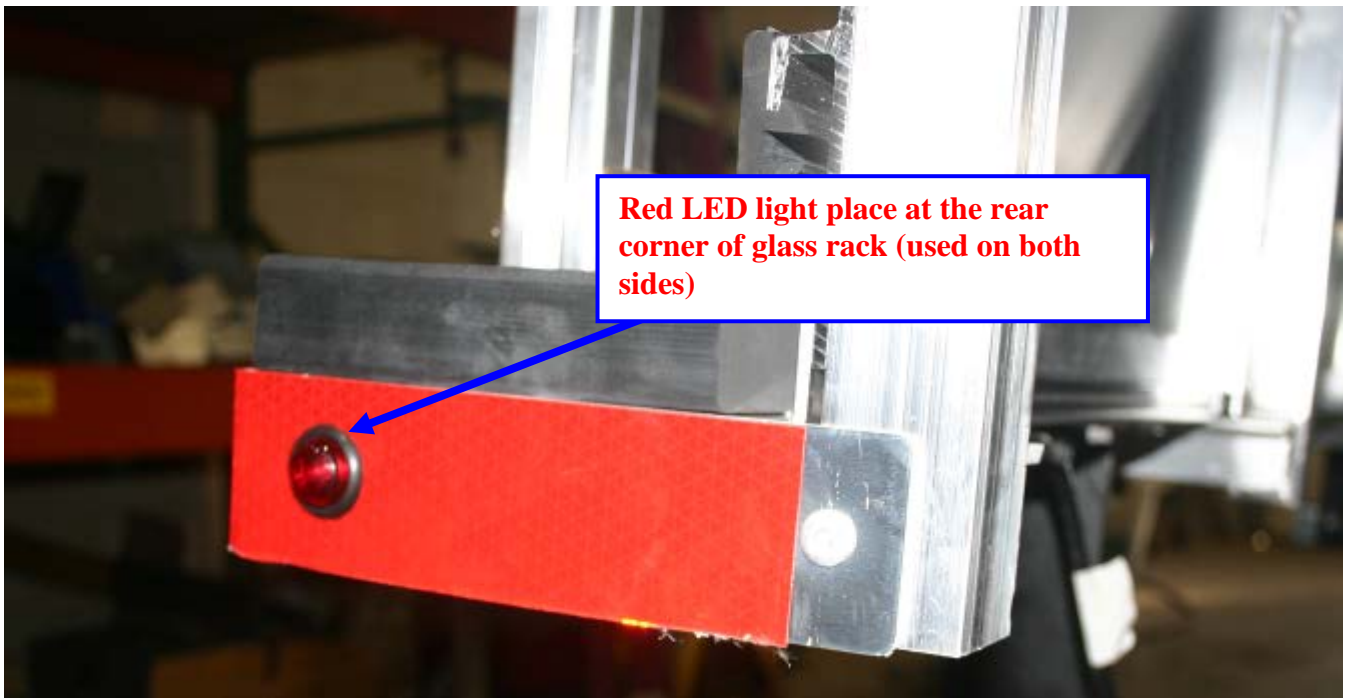
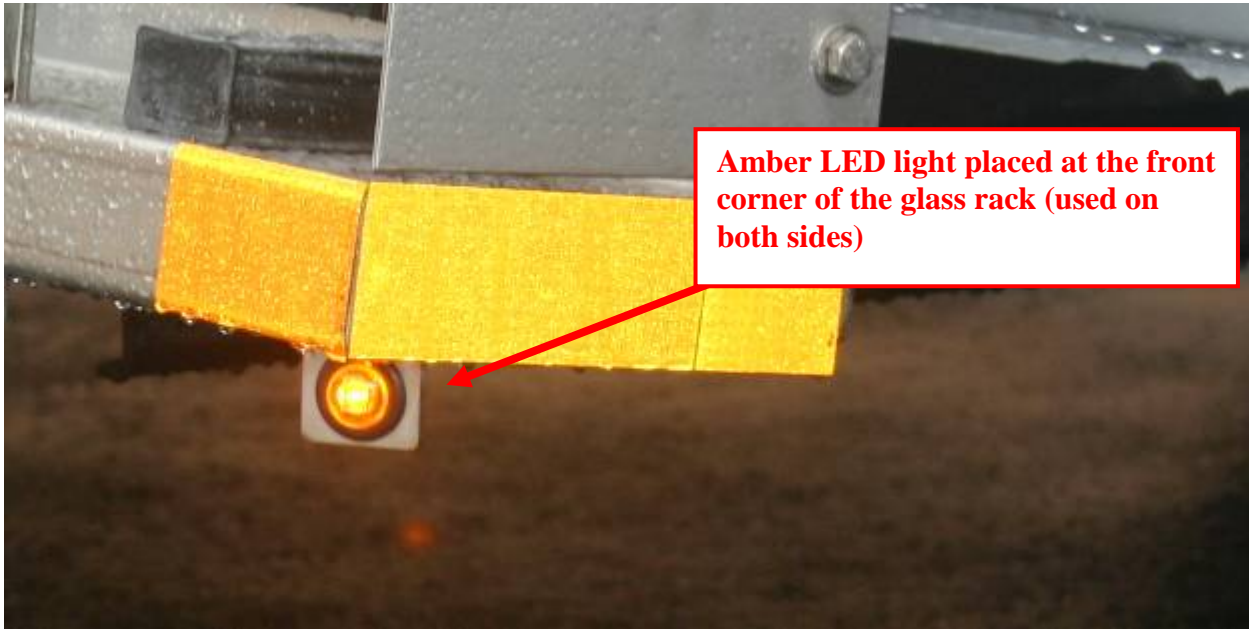




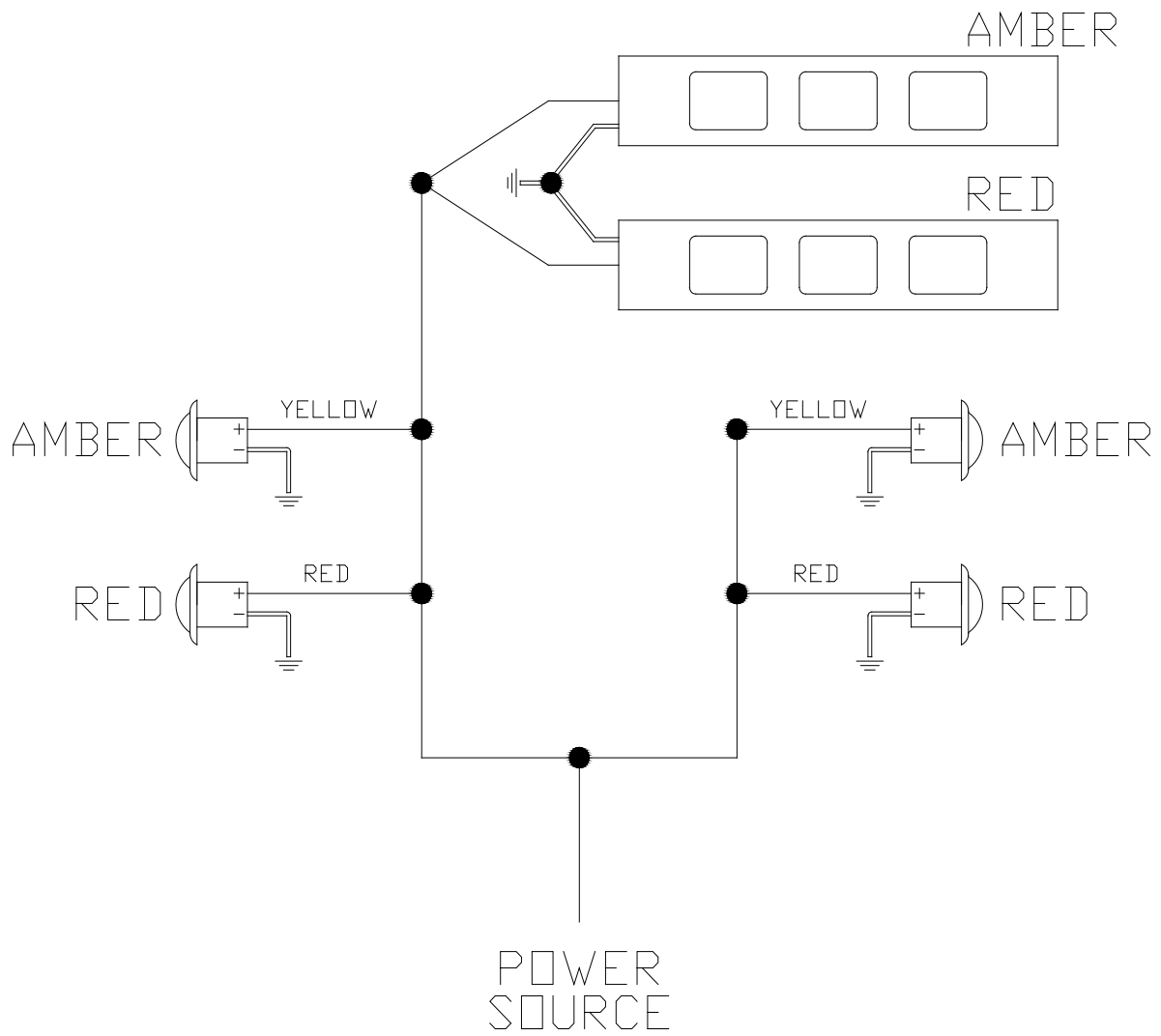
Red lights to be placed facing away from cab



Amber lights to be placed facing toward the cab



Pickup Glass Rack Wiring Instructions



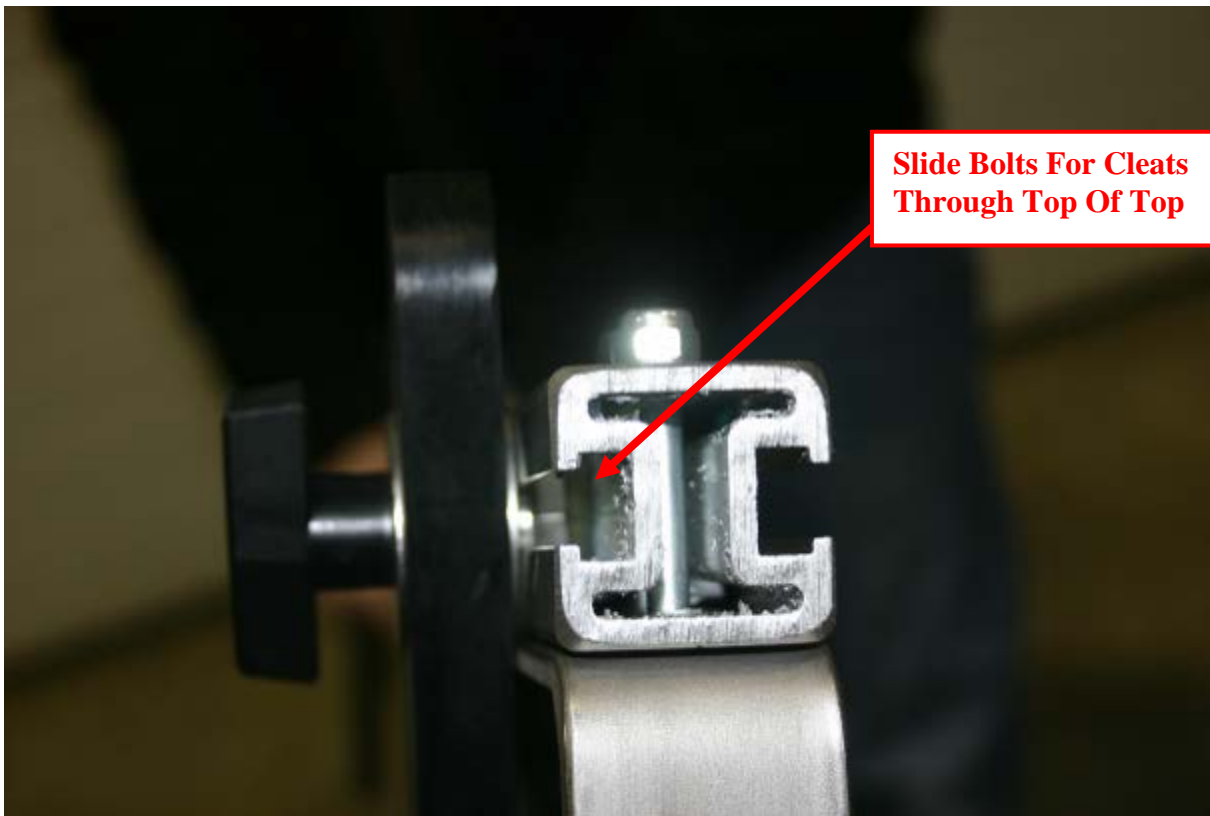
TIE INTO MARKER OR TAG LIGHT CIRCUIT.

Poles

Use Bag P-6 & P-7 Hardware for this next part. See part list on last page for all available parts involved.

Locate the triangle cleats. You can slide them onto the poles from the top. The bottom has a stop to prevent the cleats from sliding out. Slide the head of the stainless bolt down the track in the pole. Put 3 cleats on one side and 2 on the other. **(Bag P-6 Hardware)**

Repeat the same steps below by grabbing the additional hardware in **Bag P-7**



Loose Front Stop

Use Bag P-8 Hardware for this next part. See part list on last page for all available parts involved.



(2) Bolts need to be drilled into glass rack for Removable Front Stop

MyGlassTruck.com ships the glass rack front stop loose. Use the 2 ½" x 3/8" bolts provided (x 4) in (Bag P-8 Hardware) Bolt the stop directly to the front of the glass rack.

Non Attached Horizontal Slat

Use Bag P-5 Hardware for this next part. See part list on last page for all available parts involved.

Since MyGlassTruck.com can not predict where every fuel door is located, we ship the horizontal slat that would get in the fuel door's way loose. This is so you do not have to make an ugly cut on your rack to access your fuel door.



Find a good spot either above or below your fuel door to place horizontal slat.

Using 1" x ¼" bolts (**x 10**), washers (**x 20**), nuts (**x 10**) secure the horizontal slat back to glass rack. (**Bag P-5 Hardware**)



We also provide 25" vertical rubber to be placed into missing area (**Hardware placed in a box in crate**) Vertical rubber will need to be cut to size. Size is determined on your desired slat placement.



Note: (**x1**) 45" piece of post will be provide in case one of our vertical posts fall over the fuel door. Cut the post out to expose and access the fuel door. Use the provided post and hardware to strengthen the rack by placing it to the right or the left of the fuel door. Use the provided 1" x ¼" bolts (**x10**), washers (**x20**), nuts (**x10**). (**Bag P-9 Hardware**)

FINAL INSPECTION CHECK LIST

- A. () All bolts tight where rack bolts to the vehicle body
- B. () All bolts are tight where the under body mounts secure the rack to the chassis
- C. () All under body mount bolts are tight
- D. () All bolts securing the rack ledge to the under body mounts are tight
- E. () Wheel skirt properly bolted down
- F. () All poles have cleats secured with wing nuts
- G. () Front body stop bolted on securely
- H. () Body Support tubes are bolted and secure
- I. () Top Crossmembers are bolted and secure
- J. () All lights work properly

WARRANTY VALID ONLY IF THE FORM BELOW IS COMPLETED AND MAILED BACK WITHIN 15 DAYS OF INSTALLATION.

System complete by: (company)- _____

(installer's name)- _____

(completion date)- _____

MyGlassTruck.com & Demountable Concepts, Inc. is always looking for ways to improve. Please make some comments to help us improve the Van Rack Installation Instructions.

Fax or Mail Back:

MyGlassTruck.com

Demountable Concepts, Inc.

200 Acorn Rd.

Glassboro, NJ 08028

800.254.3643

toll free

856.863.0900

phone

856.863.6704

FAX

COMMENTS:



GLASS RACK PARTS LIST

Standard Under Mount Mounting Hardware

Glass Rack Under Body Mount Hardware Bag P-1

Qty.	Size	Desc.
3	3/8"	1 1/2" Zinc Self Tapping Bolt
3	3/8"	USS Split Washer Stainless
16	3/8" - 16	1" Hex Cap Screw Stainless
14	3/8" - 16	1 1/2" Hex Cap Screw Stainless
28	3/8"	USS Flat Washer Stainless
30	3/8" - 16	Nylon Insert Locknut Plated

Standard Pickup Rack Crossbar Mounting Hardware

Glass Rack Crossbar Mounting Hardware P-2

Qty.	Size	Desc.
8	3/8" - 16	2 1/2" Hex Cap Screw Stainless
16	3/8"	Stainless Washer
8	3/8" - 16	Nylon Insert Locknut Plated

Standard D/S & P/S Mounting Hardware

Glass Rack D/S & P/S Mounting To Bed Rail Hardware Bag P-3

Qty.	Size	Desc.
8	3/8" - 16	1 1/2" Hex Cap Screw Stainless
16	3/8"	1 1/2" Stainless Fender Washer
8	3/8"	USS Flat Washer Stainless
8	3/8" - 16	Nylon Insert Locknut Plated

Standard Under Mount Mounting Hardware (No Wheel Skirt)

Glass Rack Under Body Mount Hardware (No Wheel Skirt) Bag P-4

Qty.	Size	Desc.
8	3/8" - 16	1" Hex Cap Screw Stainless
16	3/8"	USS Flat Washer Stainless
8	3/8" - 16	Nylon Insert Locknut Plated

Fuel Slat Hardware

Glass Rack Loose Fuel Slat Hardware P-5

Qty.	Size	Desc.
10	1/4" - 20	1" Hex Cap Screw Stainless
10	1/4" - 20	Nylon Insert Locknut Plated
20	1/4" - 20	USS Flat Washer Stainless

Triangle Cleat Hardware (Standard 3 Poles 5 Cleat List)

Glass Rack T-6 Adjust-a-Pole Hardware P-6

15	Wing nuts	
15	3/8"	1 1/2" Hex Cap Screw stainless
30	3/8"	1 1/2" Stainless Fender washer

Triangle Cleat Hardware (Standard 3 Poles 5 Cleat List)

Glass Rack T-6 Adjust-a-Pole Hardware P-7

15	Wing nuts	
15	3/8"	1 1/2" Hex Cap Screw stainless
30	3/8"	1 1/2" Stainless Fender washer

Loose Front Stop

Glass Rack Loose Front Stop Hardware P-8

4	3/8"-16	2 1/2"	Hex Cap Screw Stainless
8	3/8"		USS Flat Washer Stainless
4	3/8"		Nylon Insert Locknut Plated

Loose Extra Vertical Posts

Glass Rack Loose Vertical Post Hardware P-9

Qty.	Size	Desc.
10	1/4" - 20	1" Hex Cap Screw Stainless
10	1/4" - 20	Nylon Insert Locknut Plated
20	1/4" - 20	USS Flat Washer Stainless

Miscellaneous Parts

Qty.	Desc.
4	Under Body Mount 3PCS
4	Rubber Wedge
4	4" x 4" x 3/16" Aluminum Shim
1	Amber Light Bar
2	Amber LED Light
1	Red Light Bar
2	Red LED Light
5	25" Vertical Rubber
30	Cleats
2	Front Stop

Items Loose In Crate

6	Aluminum Poles
1	Loose Fuel Slat With Rubber
2	Aluminum Crossbar
1	45" Extra Post