

INSTALLATION INSTRUCTIONS

MyGlassTruck.com

Division of Demountable Concepts, Inc

Aluminum Sprinter Rack Installation



MyGlassTruck.Com

Demountable Concepts, Inc.

200 Acorn Rd.

Glassboro, NJ 08028

800.254.3643

856.863.0900

856.863.6704

info@demount.com

www.demount.com

toll free

local

fax

email

web

Demountable Concepts

Sprinter Rack Installation

Installation Instructions

ATTENTION:

The success or failure of this equipment could very well depend on a thorough and proper installation. Any missed steps or improper procedures could result in serious injury or death to the installer or end user. Read and understand the contents of these instructions before proceeding.

IMPORTANT:

When installed, this Glass Rack must not alter or prevent vehicle compliance to any existing state or federal standards. Each vehicle manufacturer's recommendations should be consulted for compliance.

NOTE TO INSTALLER

Prior to installation read the entire Instruction guide and all of the Installation Instructions to familiarize yourself with this system.

INSTALLATION INSTRUCTIONS

INTRODUCTION

EVEN THOUGH THE FOLLOWING GOES WITHOUT SAYING, WE FEEL COMPELLED TO STATE . . .

This Glass Rack system should only be installed by those with sufficient basic skills to understand the installation and operation of glass carrying equipment, along with the equipment on which these systems are installed. These installation instructions are not intended to give rationale for all of the instructions that are given; however, it is the intent of these instructions to give the installer both the operations and what we believe to be the most desirable sequence of implementing these operations. These instructions can in no way expand into an area where they will replace a qualified person, or clear thinking, common sense and a basic knowledge that must be possessed by the installer.

We urge the installer (or anyone else) to call us if they have any questions. We have qualified personnel at our Glassboro, New Jersey plant to answer any questions that you may have. A detailed discussion on the telephone is far more satisfactory and productive than a detailed written explanation.

It has been our experience that a knowledgeable journeyman following these installation instructions and observing the operation of the Glass Carrying System will have sufficient comprehension to enable this person to troubleshoot and correct all normal problems that may be encountered. However, again we urge you to call us at our Glassboro, New Jersey plant if you find any problems during installation or have any doubts or questions.

MyGlassTruck.com

Demountable Concepts, Inc.

200 Acorn Rd.

Glassboro, NJ 08028

800.254.3643

toll free

856.863.0900

phone

856.863.6704

fax

sales@MyGlassTruck.com

email

www.MyGlassTruck.com

web

Required tools: Electric Drill or Cordless, 5/16 & 3/8" drill bits, 9/16 and 1/2" sockets and wrenches, impact gun not needed but highly suggested.

Installation Instructions- THROUGH THE SPRINTER WALL MOUNT NON ROOF RACK MOUNT –

FOR ROOF RACK MOUNT SKIP AHEAD to PAGE 8

Use Bag S-2 Hardware for this next part. See part list on last page for all available parts involved.

FOR ROOF RACK MOUNT SKIP AHEAD to PAGE 6

Find the front of the rack, identified by the holes where the front body stop will go

Place the rack up against the side of the vehicle with the upper mount 1/2" below the rain gutter / roof line. Use jack stands or wooden blocking to support the rack. Make sure the carrier does not interfere with any doors or fuel openings. Be sure your supports are strong enough to support the weight of the rack.



Bolt Mounting Angle Through Skin Of Sprinter Below Rain Gutter / Roof Line

Set the angle of the carrier by moving the bottom in or out. Be sure to keep the rack as close to the Sprinter as possible. If the rack is touching the Sprinter, be sure to use a rubber or foam pad between the Sprinter and the rack. Try to keep about 1/2" between the rack and the Sprinter. A safe angle is about 5 degrees. Do not exceed the legal width limit of 102"

Close-up Of Bolts Through Skin Of Vehicle



Drill 5 holes through the Sprinter and through the racks main mounting angle. If the Sprinter is double walled remove the inside panel wall for the bolts then reinstall the panel when finished.

Try to drill through the Sprinter where the roof and the wall meet. (See second photo below). Drill from the inside out through the slots (As seen below in second photo). (MGT can not be responsible for torn Sprinter side walls due to improper installation.) **(Bag S-2 Hardware)**

Try To Drill Through This Part Of The Inside Of Sprinter



ROOF RACK MOUNTING OF GLASS RACK

Locate roof rack parts as pictured here.



The Parts are:

- 3 Aluminum Crossbars
- 3- Standard open mounts (for the rack side)
- 3- Long mounts (for the NON-rack side)

Use Bag S-3 Hardware for this next part. See part list on last page for all available parts involved.

*****Note: If glass rack is double-sided, there will be more bolts involved then listed on the part list.*****

IMPORTANT Sprinter Roof Rack Information

MyGlassTruck.com **recommends** that all Sprinters should have this roof rack track installed. If the Sprinter DOES NOT have this track, then the roof rack will need to be shimmed over the track area and drilled through the Sprinters roof. **IF Sprinter is from 2006 or OLDER, Skip to Page 9.**



Roof Rack Setup

Mount Open Ended Roof Rack Mounts on the rack side of the vehicle. Space apart according to below instructions. Use 5/16" x 1 5/8" bolts w/ lock nuts and washers for bolting mount/clip to rain gutter (x6) (**Bag S-3 Hardware**)

Mount Closed Ended Roof Rack Mounts on the Non rack side of the vehicle. Make sure they line up properly with the rack side roof rack mounts. Use 5/16" x 1 5/8" bolts w/ lock nuts and washers for bolting mount/clip to rain gutter (x6) (**Bag S-3 Hardware**)



Note: See page 10 for roof rack spacing instructions.

Roof Rack Setup (FOR 2006 MODEL SPRINTERS & OLDER)

The older model sprinters come with a rain gutter that our standard roof racks can clip onto. Use this section and the below hardware if this pertains to your vehicle. **SKIP to Page 10 if NOT Applicable.**

Mount Open Ended Roof Rack Mounts on the rack side of the vehicle. Space apart according to above instructions. Use 5/16" x 1 1/2" bolts w/ lock nuts and washers for bolting mount/clip to rain gutter (x6)

Mount Closed Ended Roof Rack Mounts on the Non rack side of the vehicle. Make sure they line up properly with the rack side roof rack mounts. Use 5/16" x 1 1/2" bolts w/ lock nuts and washers for bolting mount/clip to rain gutter (x6)

Slide in the aluminum cross bars and bolt in using 5/16" x 2 1/4" bolts. (Bag S-3 Hardware)



Note: See Diagram on previous page for roof rack spacing layout.

Install roof rack mounts

- Start first mount as far forward on roof rack track as possible.
- Install the center bar 60" from the front of the roof rack track
- Install the rear bar 103" from the front of the roof rack track

You can vary these dimensions slightly as they are simply a guide. The object is to keep the cross bars as close to a vertical post on the glass rack as possible for added strength.

Slide in the aluminum cross bars and bolt in using 5/16 x 2 1/2" bolts, nuts, & washers.
(Bag S-3 Hardware)

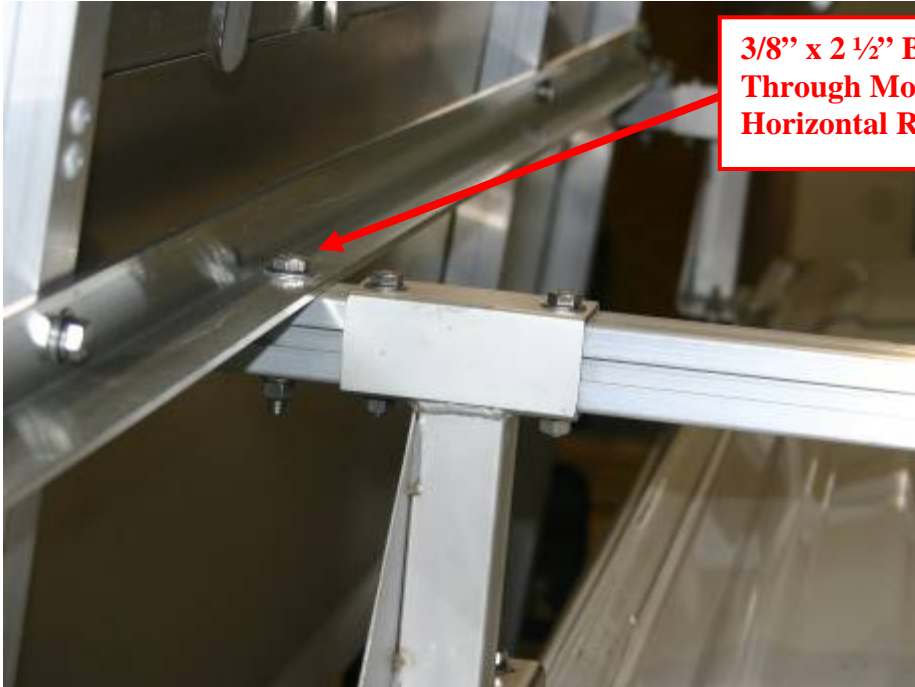


Hang the rack

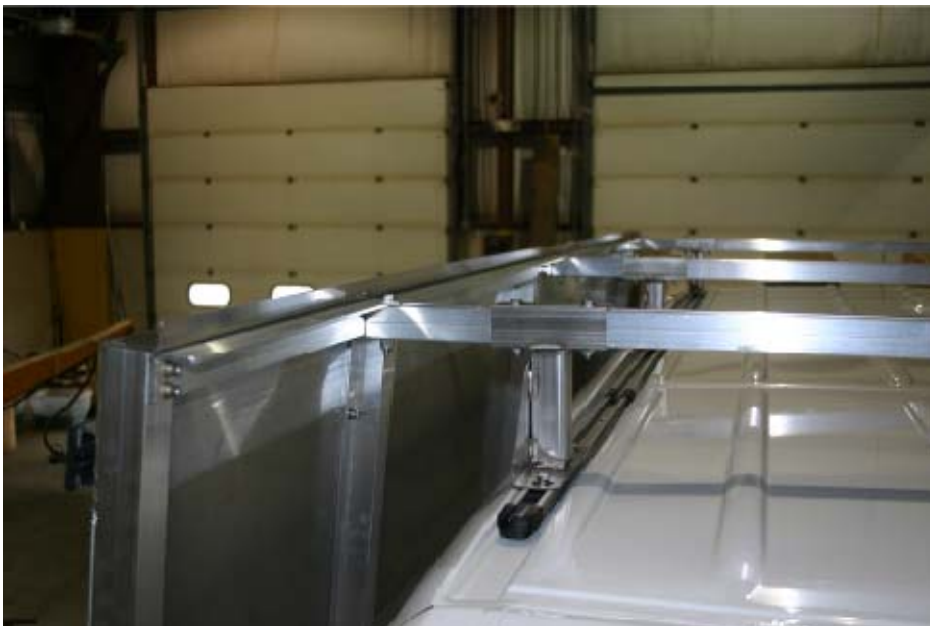
Hang the rack from cross bars as shown. Confirm that the rack is at the correct elevation for your vehicle (**CHECK CLEARANCE FOR THE FRONT DOOR**).



Bolt the rack to the cross bars using 3/8 x 2 1/2" bolts. Be sure to drill through the center of the angle on the back of the glass rack. **Tighten ALL 15 bolts on the roof rack and glass rack. (Bag S-3 Hardware)**



3/8" x 2 1/2" Bolts Going Through Mounting Angle & Horizontal Roof Rack Bar



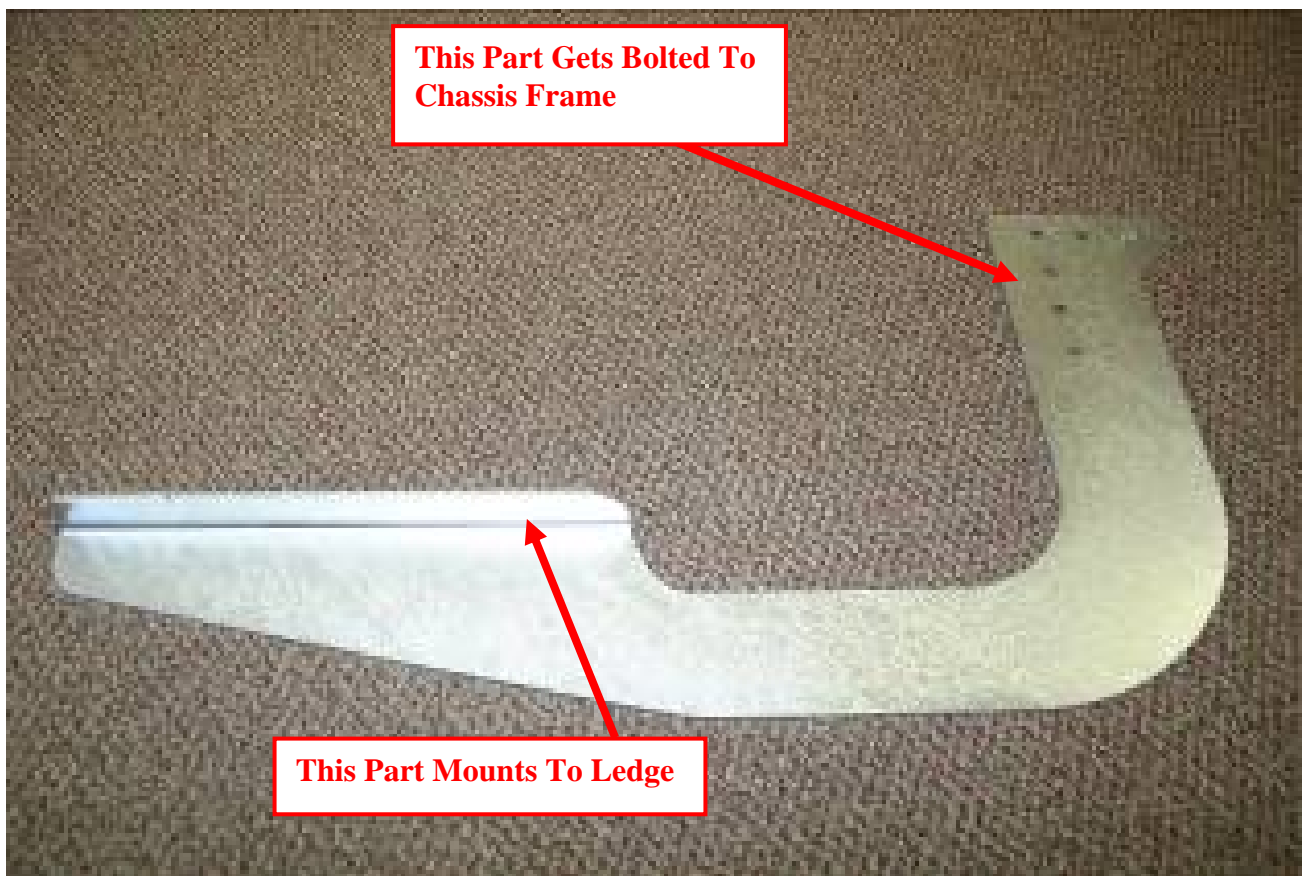
Under Body Mounts

Use Bag S-1 Hardware for this next part. See part list on last page for all available parts involved.

*****Note: If glass rack is double-sided, there will be more bolts involved then listed on the part list.*****

Note: IF Double-Sided, make sure your vehicle does NOT exceed the 102" W Legal DOT Limit when mounting. The rack WILL NOT be able to be set at a 5 degree angle on a Double-Sided Sprinter.

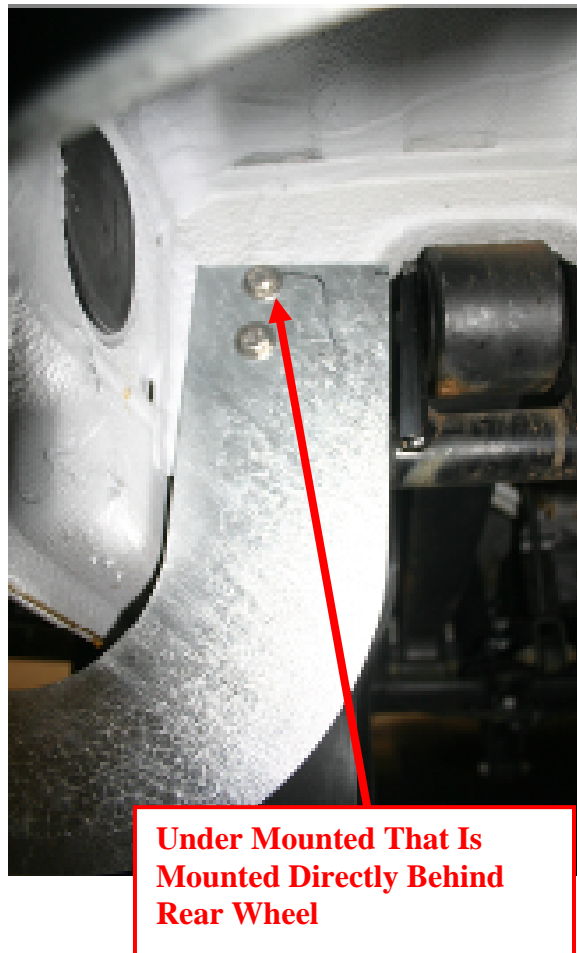
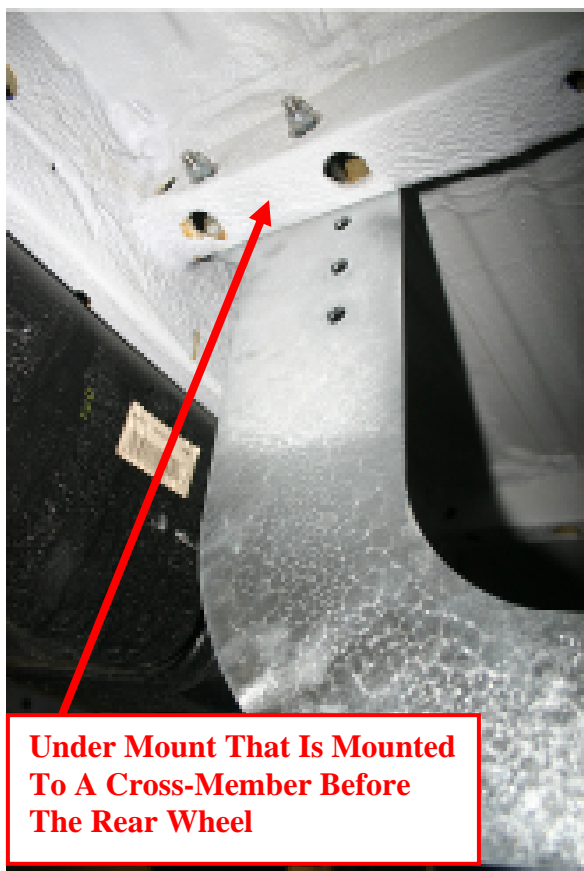
These brackets are very strong and provide load carrying capacity. They will help support the load as well as stabilize the bottom of the rack from moving in and out.



Note: If This Is a 2006 Or OLDER Sprinter, Skip to Page 15 for Specific Mounting Instructions

Look under your vehicle. Find the cross-member that is the farthest forward on the glass rack and the one the farthest back to the beginning of the rear wheel. This is where you will install your under body mounts. Use your 3/8" x 3" bolts for the front and middle under body mounts. **(Bag S-1 Hardware)** (See First Photo)

Find the cross-member that is behind the rear wheel and install your under body mount there. Use 3/8" x 1" bolts for this one. **(Bag S-1 Hardware)** (See Second Photo)



Secure all the bracket bolts.

Once installed, skip to Page 17

Under Mount Setup (FOR 2006 MODEL SPRINTERS & OLDER)

The older model Sprinters have a different under carriage design then the new models. Due to this, our standard under mounts need to be slightly modified to work on these vehicles.

Provided in the crate are (x2) stainless steel angles and (x2) square plates and extra bolts. The first under mount will **NEED** to be bolt through the floor of the Sprinter. Use the stainless steel angle, extra bolts, and square plate to modify the under mount and bolt through the floor. (x1 each)



Stainless Steel Angle Used To Modify Under Mount & Mount Through Sprinter Floor



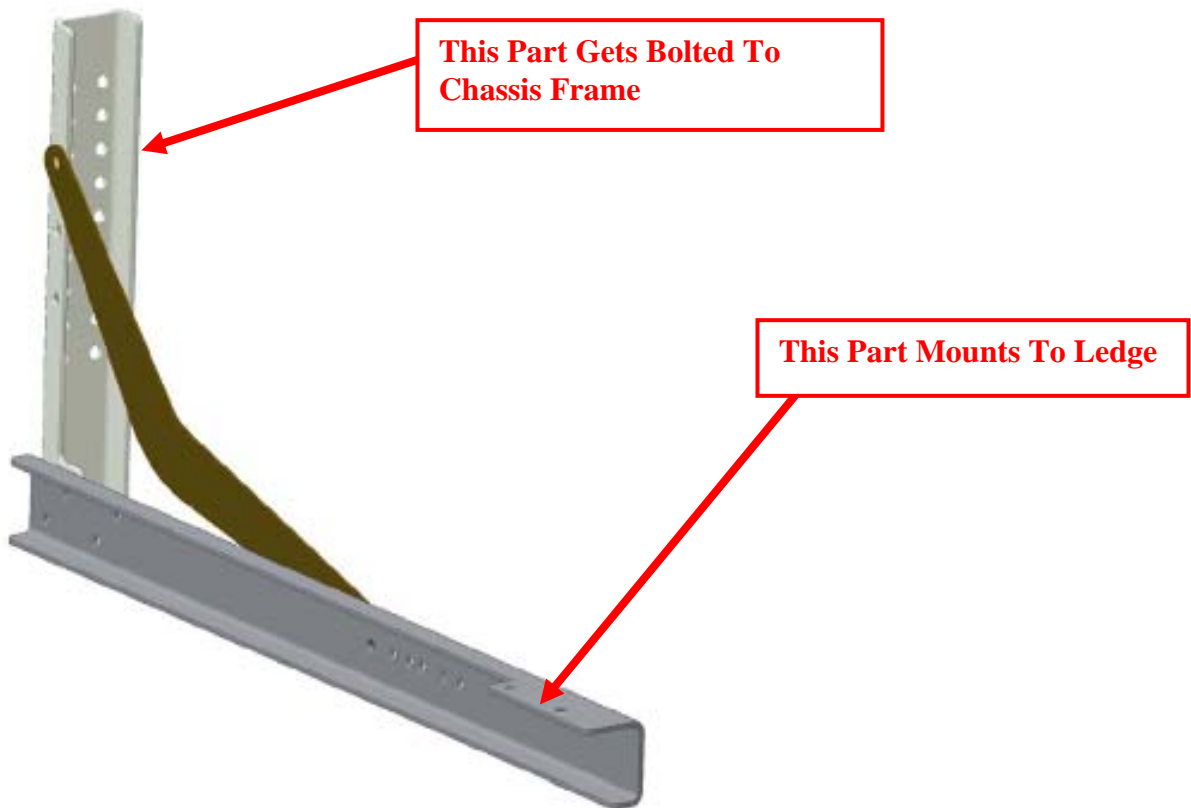
Square Plate Used To Hold Under Mount To Sprinter (Interior of Sprinter is Shown)

Sometimes the 2nd mount can be mounted normally if this is the case, please reference **Page 14** for Mounting. **IF NOT**, please repeat the above for the second mount.

Just like the 2nd under mount, there are (2) different ways that the 3rd under mount can be mounted behind the rear wheels on these older model vehicles.

Provided in the crate are a 3rd Sprinter Under Mount, and our Standard Under Mount for Cargo Vans. If the Sprinter Under Mount **CAN NOT** fit properly, please assemble the standard mount for Cargo Vans and follow the below.

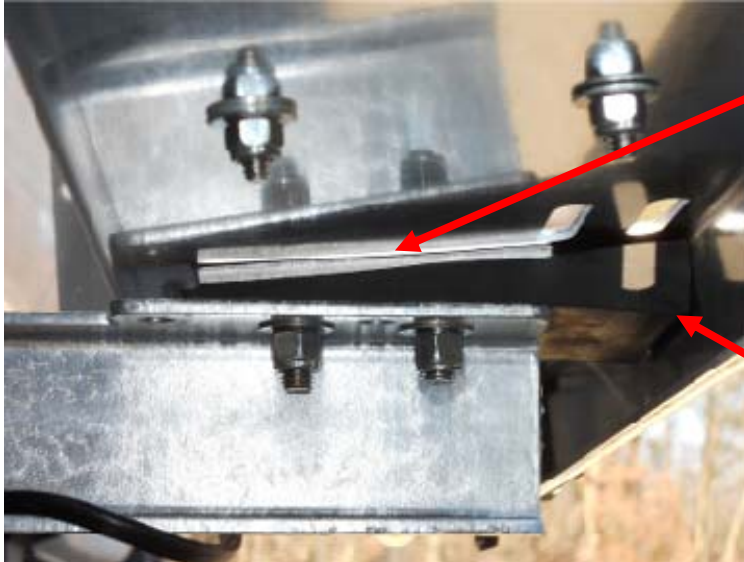
Using 3/8" x 1" bolts w/ locknuts (**x 12**), pre-assemble the under body mounting brackets.



Be sure to use minimum of 2 bolts per bracket through the chassis frame. Get one bolt high and one bolt low on the truck frame.

Using self tapping 3/8" x 1 1/2" bolts w/ lock washers, nuts (**x 6**) bolt the mounting brackets to the truck frame with the long arm of the bracket under the ledge.

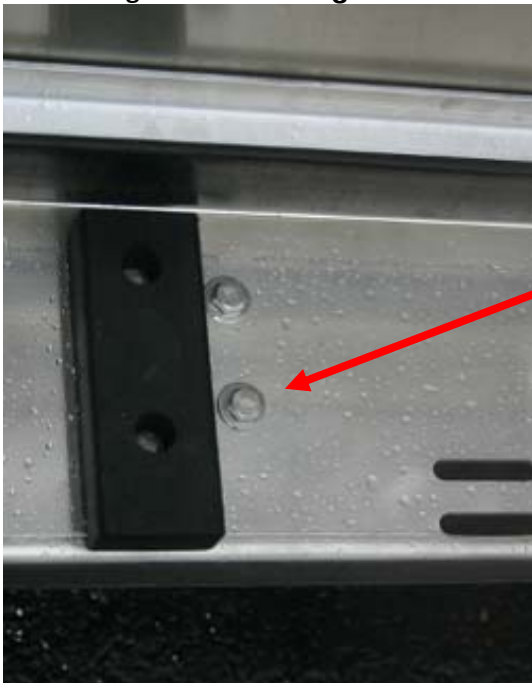
Use our 4" x 4" aluminum wear plate between top of bracket and bottom of ledge.
(Shrink Wrapped Loose) If there is a gap between the under mount and the ledge, add provided shims to bridge the gap. **(Shrink Wrapped Loose)**



Aluminum Wear Plate

Rubber Shim

Using 3/8" x 1 1/2" w/ washers, nuts (x 6) drill through the ledge into the top of the mounting bracket. **(Bag S-1 Hardware)**



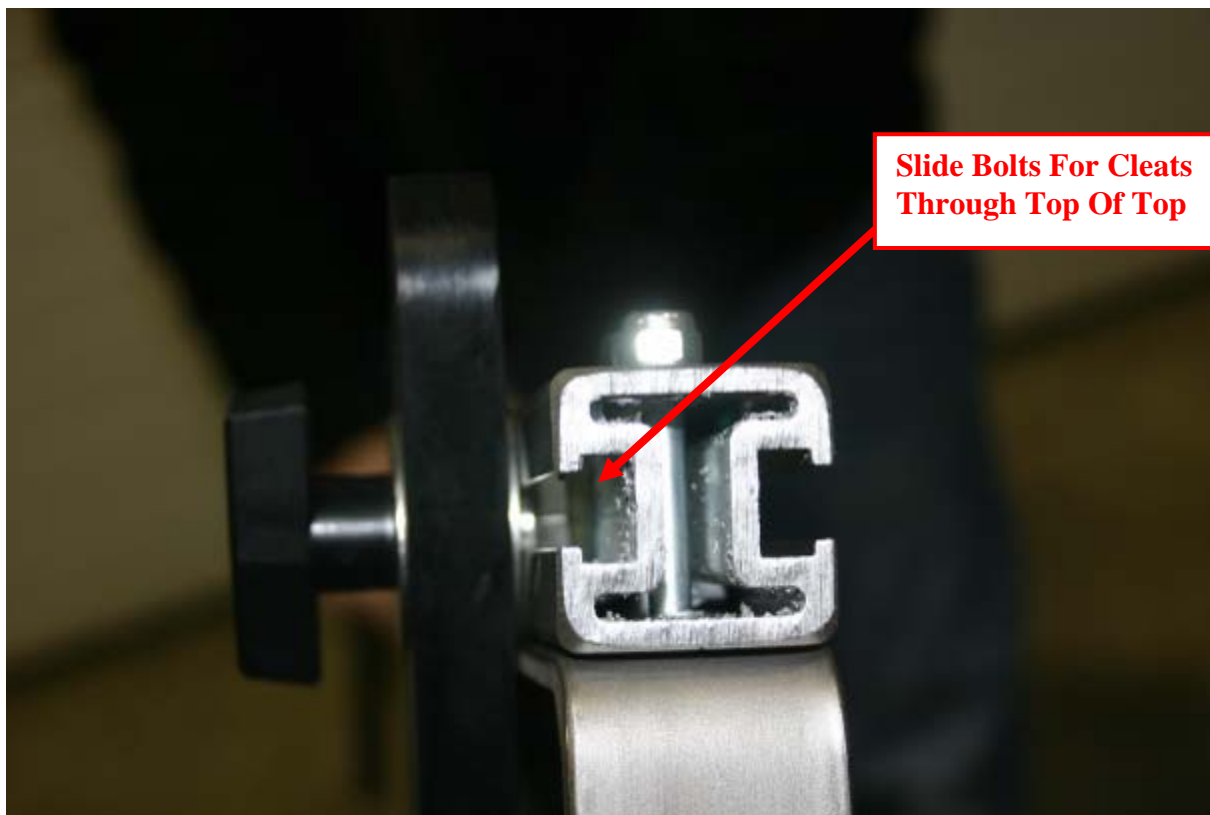
Make Sure To Watch Out For Ledge Blocks When Bolting UnderMounts To Ledge

Double-check all connections, all nuts and all bolts.

Poles

Use Bag S-5 Hardware for this next part. See part list on last page for all available parts involved.

Locate the triangle cleats. You can slide them onto the poles from the top. The bottom has a stop to prevent the cleats from sliding out. Slide the head of the stainless bolt down the track in the pole. Put 3 cleats on one side and 2 on the other. **(Bag S-5 Hardware)**



Loose Front Stop

Use **Bag S-6 Hardware** for this next part. See part list on last page for all available parts involved.



**(2) Bolts need to be drilled
into glass rack for
Removable Front Stop**

MyGlassTruck.com ships the glass rack front stop loose. Use the 2 ½" x 3/8" bolts provided (**x 2**) in (**Bag S-6 Hardware**) Bolt the stop directly to the front of the glass rack.

Non Attached Horizontal Slat

Use Bag S-4 Hardware for this next part. See part list on last page for all available parts involved.

NOTE: MGT ships this slat loose for Chevy, Ford, & Dodge. Even though a Sprinter's fuel door is not in the same spot as one of the brands above, sometimes we grab stock racks with the fuel slat already not installed. If that is the case, please follow the below to install it.

Since MyGlassTruck.com can not predict where every fuel door is located, we ship the horizontal slat that would get in the fuel door's way loose. This is so you do not have to make an ugly cut on your rack to access your fuel door.



Note: Picture shown is not of a van rack, but same principal applies

Find a good spot either above or below your fuel door to place horizontal slat.
Using 1" x ¼" bolts (x 10), washers (x 20), nuts (x 10) secure the horizontal slat back to glass rack. **(Bag S-4 Hardware)**



We also provide 25" vertical rubber to be placed into missing area (x 5). Vertical rubber will need to be cut to size. Size is determined on your desired slat placement.



FINAL INSPECTION CHECK LIST

- A. () All bolts tight where rack bolts to the van body
- B. () All bolts are tight where the under body mounts secure the rack to the chassis
- C. () All under body mount bolts are tight
- D. () All bolts securing the rack ledge to the under body mounts are tight
- E. () Wheel skirt properly bolted down
- F. () All poles have cleats secured with wing nuts
- G. () Front body stop bolted on securely

WARRANTY VALID ONLY IF THE FORM BELOW IS COMPLETED AND MAILED BACK WITHIN 15 DAYS OF INSTALLATION.

System complete by: (company)- _____
(installer's name)- _____
(completion date)- _____

MyGlassTruck.com & Demountable Concepts, Inc. is always looking for ways to improve. Please make some comments to help us improve the Van Rack Installation Instructions.

Fax or Mail Back:

MyGlassTruck.com
Demountable Concepts, Inc.
200 Acorn Rd.
Glassboro, NJ 08028
800.254.3643 toll free
856.863.0900 phone
856.863.6704 FAX

COMMENTS:

GLASS RACK PARTS LIST

Standard Van Mounting Hardware

Glass Rack Under Body Mount Hardware Bag S-1

3	3/8"-16	1"	Hex Cap Screw Stainless
6	3/8"-16	1 1/2"	Hex Cap Screw Stainless
4	3/8"-16	3"	Hex Cap Screw Stainless
13	3/8"-16		Nylon Insert Locknut Plated
26	3/8"		USS Flat Washer Stainless

Through Van Mounting (If Roof Rack Is Not Purchased)

Glass Rack Through Van Mounting Hardware Bag S-2

Qty.	Size	Desc.
5	3/8"-16	2" Stainless all thread
4	3/8"-16	1" Hex Cap Screw Stainless
10	3/8"-16	Nylon Insert Locknut Plated
20	3/8"	1 1/2" Stainless Fender washer
15	3/8"	USS Flat Washer Stainless

Rack Rack Mounting (If Roof Rack Is Purchased)

Glass Rack Roof Rack Mounting Hardware Bag S-3

Qty.	Size	Desc.
12	5/16"-18	5/8" Hex Cap Screw Stainless
12	5/16"-18	2 1/2" Hex Cap Screw Stainless
12	5/16"-18	Zinc Nyloc Nut
12	5/16"	Zinc split lock washer
36	5/16"	USS Flat Washer Stainless
3	3/8"-16	2 1/2" Hex Cap Screw Stainless
11	3/8"	USS Flat Washer Stainless
3	3/8"	Nylon Insert Locknut Plated

12	Roof Rack Steel Plates Drilled 5/16 & Tapped	
3	Roof Rack Bars	Cut to size
3	Stainless Roof rack mount sets SHORT (1 open, 1 closed)	60

Continued....Turn Over...

Fuel Slat Hardware

Glass Rack Loose Fuel Slat Hardware Bag S-4

Qty.		Size	Desc.
10	1/4"-20	1"	Hex Cap Screw Stainless
10	1/4"-20		Nylon Insert Locknut Plated
20	1/4"-20		USS Flat Washer Stainless

Triangle Cleat Hardware (Standard 3 Poles 5 Cleat List)

Glass Rack T-6 Adjust-a-Pole Hardware Bag S-5

	15	Wing nuts		
	15	3/8"	1 1/2"	Hex Cap Screw stainless
	30	3/8"	1 1/2"	Stainless Fender washer

Loose Front Stop (Use If Slat Is Not Attached)

Glass Rack Loose Front Stop Hardware S-6

	2	3/8"-16	2 1/2"	Hex Cap Screw Stainless
	4	3/8"		USS Flat Washer Stainless
	2	3/8"		Nylon Insert Locknut Plated

Loose in Crate

	3	Aluminum Poles		
	1	Loose fuel slat with rubber		

Sprinter Miscellaneous Parts

Qty.	Desc.	
3	Under body Mount 3 piece kits	3 PCS
3	Rubber wedge	
3	4" x 4" x 3/16" aluminum shim	
5	25" Vertical rubber	
15	Cleats	