

## INSTALLATION INSTRUCTIONS

**MyGlassTruck.com**  
**Division of Demountable Concepts, Inc**

# Aluminum Nissan NV Rack Installation



### **MyGlassTruck.Com**

Demountable Concepts, Inc.  
200 Acorn Rd.  
Glassboro, NJ 08028  
800.254.3643  
856.863.0900  
856.863.6704  
info@demount.com  
www.demount.com

toll free  
local  
fax  
email  
web

# Demountable Concepts

---

## Sprinter Rack Installation

### Installation Instructions

#### ***ATTENTION:***

The success or failure of this equipment could very well depend on a thorough and proper installation. Any missed steps or improper procedures could result in serious injury or death to the installer or end user. Read and understand the contents of these instructions before proceeding.

#### ***IMPORTANT:***

When installed, this Glass Rack must not alter or prevent vehicle compliance to any existing state or federal standards. Each vehicle manufacturer's recommendations should be consulted for compliance.

#### **NOTE TO INSTALLER**

Prior to installation read the entire Instruction guide and all of the Installation Instructions to familiarize yourself with this system.

# INSTALLATION INSTRUCTIONS

---

## INTRODUCTION

*EVEN THOUGH THE FOLLOWING GOES WITHOUT SAYING, WE FEEL COMPELLED TO STATE . . .*

This Glass Rack system should only be installed by those with sufficient basic skills to understand the installation and operation of glass carrying equipment, along with the equipment on which these systems are installed. These installation instructions are not intended to give rationale for all of the instructions that are given; however, it is the intent of these instructions to give the installer both the operations and what we believe to be the most desirable sequence of implementing these operations. These instructions can in no way expand into an area where they will replace a qualified person, or clear thinking, common sense and a basic knowledge that must be possessed by the installer.

We urge the installer (or anyone else) to call us if they have any questions. We have qualified personnel at our Glassboro, New Jersey plant to answer any questions that you may have. A detailed discussion on the telephone is far more satisfactory and productive than a detailed written explanation.

It has been our experience that a knowledgeable journeyman following these installation instructions and observing the operation of the Glass Carrying System will have sufficient comprehension to enable this person to troubleshoot and correct all normal problems that may be encountered. However, again we urge you to call us at our Glassboro, New Jersey plant if you find any problems during installation or have any doubts or questions.

### **MyGlassTruck.com**

### **Demountable Concepts, Inc.**

200 Acorn Rd.

Glassboro, NJ 08028

800.254.3643

toll free

856.863.0900

phone

856.863.6704

fax

sales@MyGlassTruck.com email

www.MyGlassTruck.com

web

**Required tools: Electric Drill or Cordless, 5/16 & 3/8" drill bits, 9/16 and 1/2" sockets and wrenches, impact gun not needed but highly suggested.**

## **ROOF RACK MOUNTING OF GLASS RACK**

Locate roof rack parts as pictured here.



The Parts are:

- 3- Aluminum Crossbars
- 3- Standard open mounts (for the rack side)
- 3- Long mounts (for the NON-rack side)
- 2- Stainless steel angles with roof rack mounts pre assembled to it

**Use Bag N-2 & N-3 Hardware for this next part. See part list on last page for all available parts involved.**

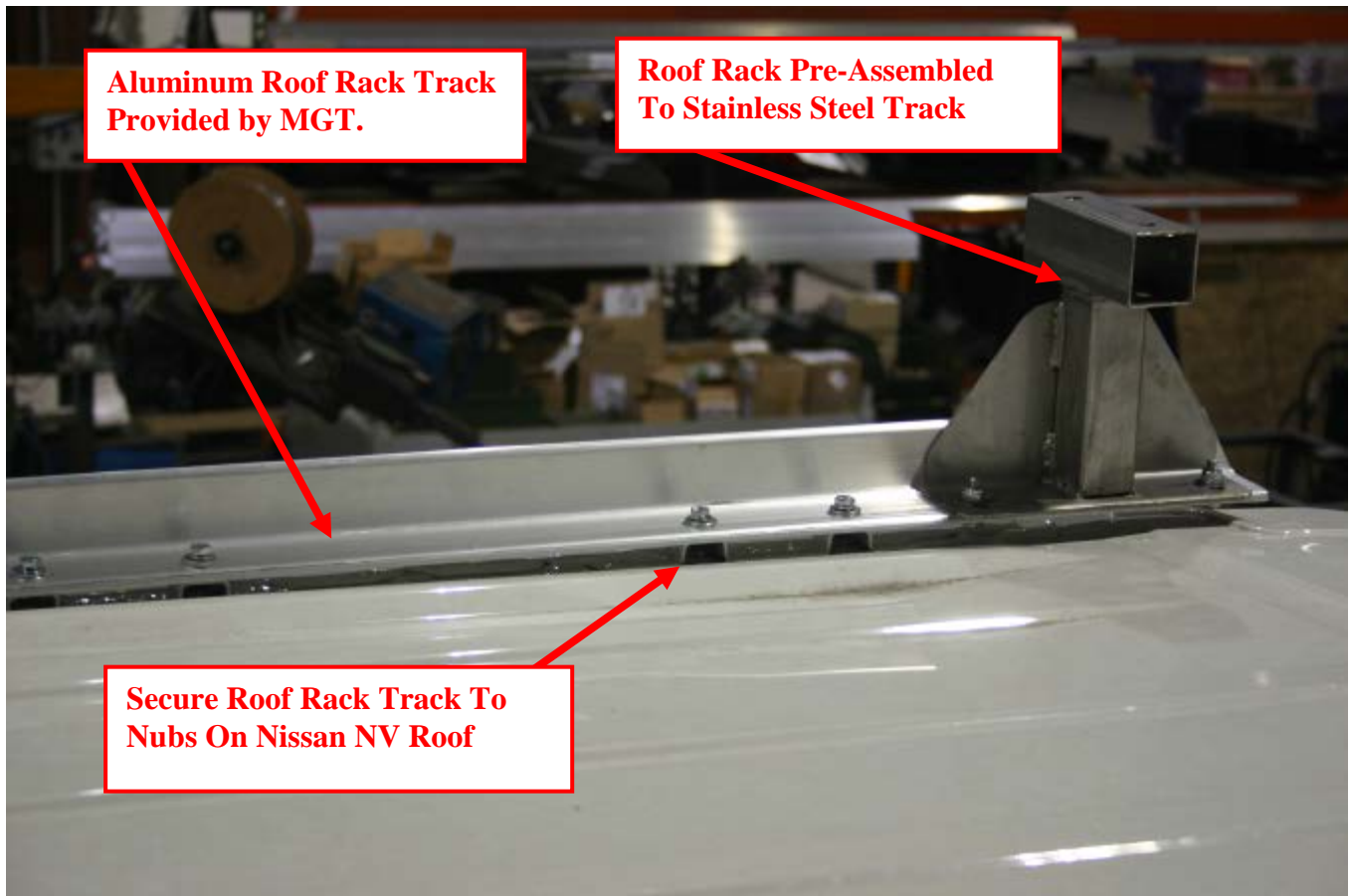
**\*\*\*Note: If glass rack is double-sided, there will be more bolts involved then listed on the part list.\*\*\***

## IMPORTANT Nissan NV Roof Rack Information

MyGlassTruck.com **will have** an aluminum track **pre-assembled** for the Nissan NV roof rack. This roof rack track will already have the (3) left and (3) right side roof rack mounts already bolted to it.

Line up the aluminum angle to match the holes on the roof rack. **Please notice that the open ended short mounts go on the side the glass rack will be placed on.**

Use the ¼" McMaster Carr Clip to slip over the nubs on the Nissan Roof Rack (x16) (**Bag N-3 Hardware**) Once done, use the 1" x ¼" bolts (x16), washers (x16), and loc washers (x16) to secure the track to the Nissan roof. (**Bag N-3 Hardware**)



## Roof Rack Setup

Mount Open Ended Roof Rack Mounts on the rack side of the vehicle.

Mount Closed Ended Roof Rack Mounts on the Non rack side of the vehicle.

Slide in the aluminum cross bars and bolt in using 5/16" x 2 1/2" bolts, nuts, & washers. **(Bag N-2 Hardware)**



**\*Above photo is not of a Nissan NV, but used as an example**

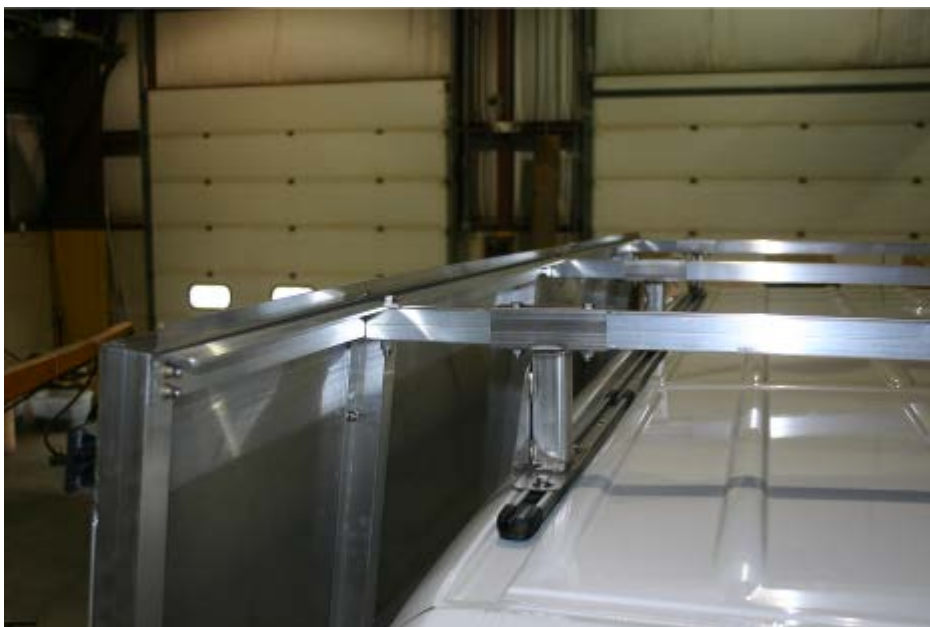
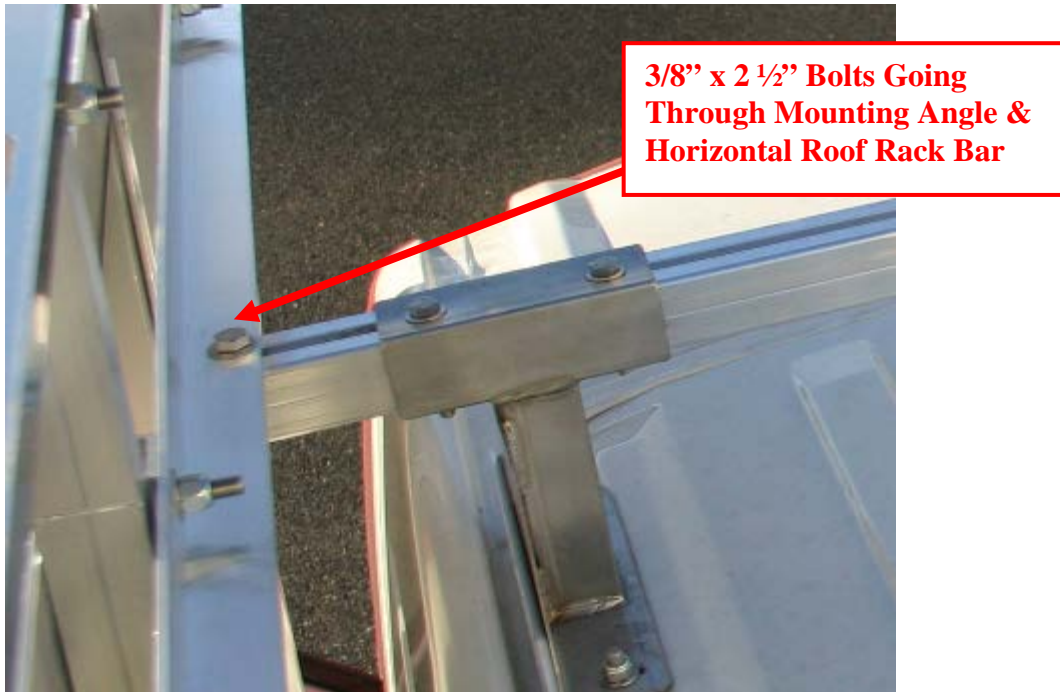
## Hang the rack

Hang the rack from cross bars as shown. Confirm that the rack is at the correct elevation for your vehicle (**CHECK CLEARANCE FOR THE FRONT DOOR**).





Bolt the rack to the cross bars using 3/8 x 2 1/2" bolts. Be sure to drill through the center of the angle on the back of the glass rack. **Tighten ALL 15 bolts on the roof rack and glass rack.** (Bag N-2 Hardware)



**\*Above photo is not of a Nissan NV, but used as an example.**

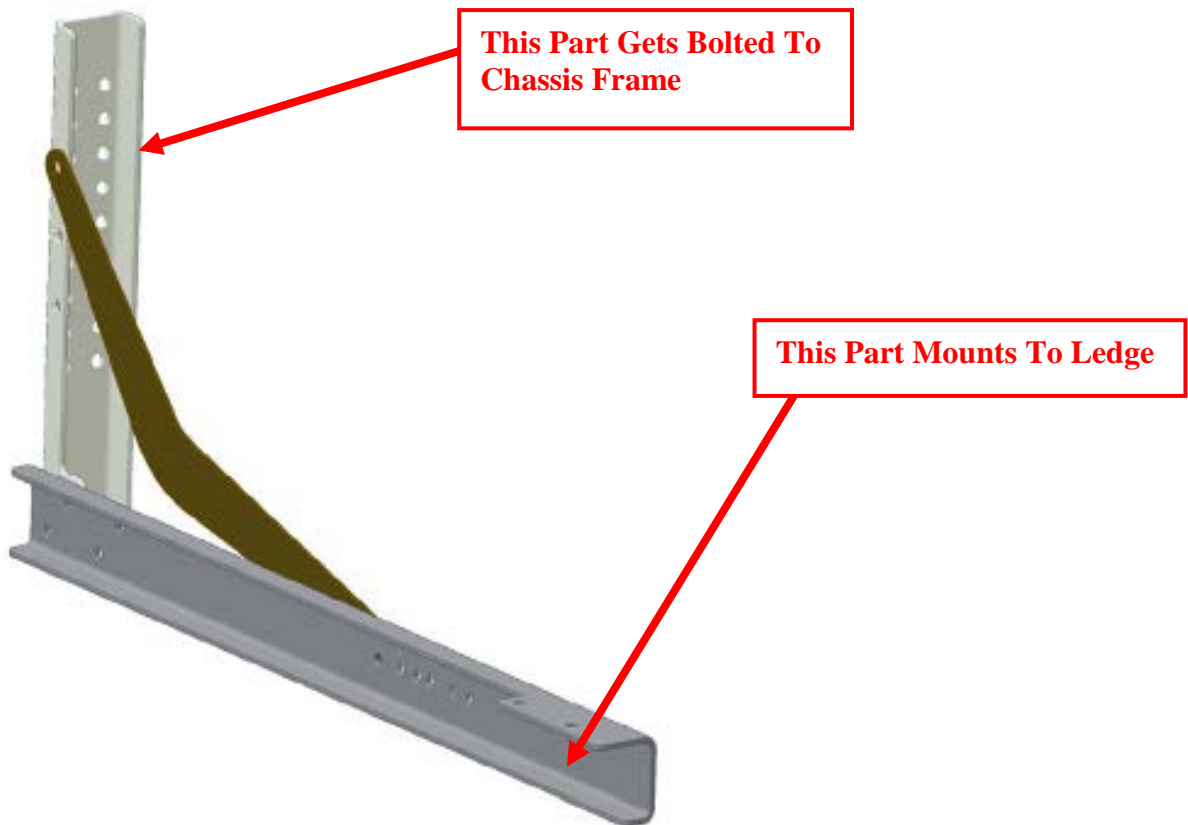


## Under Body Mounts

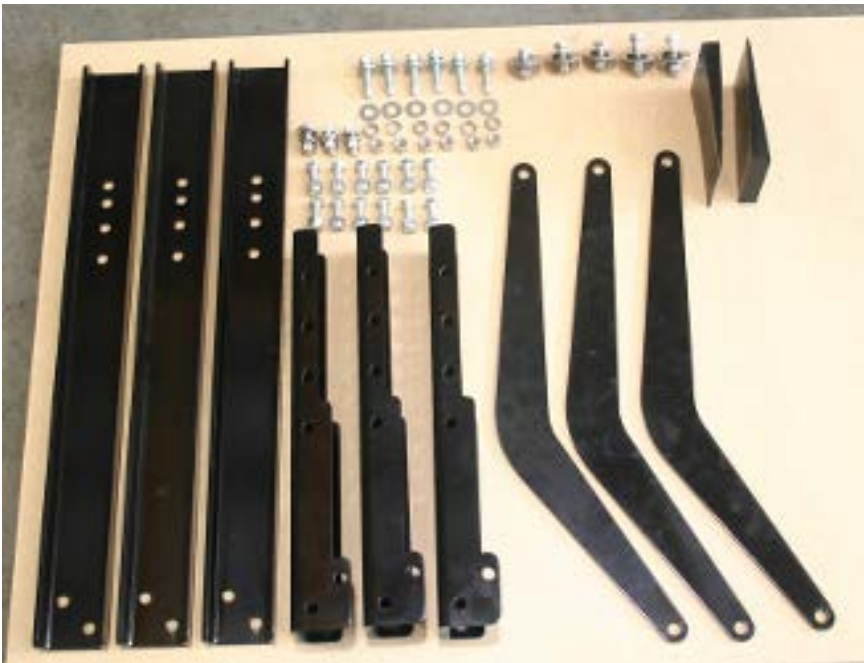
**Use Bag N-1 Hardware for this next part. See part list on last page for all available parts involved.**

**\*\*\*Note: If glass rack is double-sided, there will be more bolts involved then listed on the part list.\*\*\***

Using 3/8" x 1" bolts w/ locknuts (**x 12**), pre-assemble the under body mounting brackets. **(Bag N-1 Hardware)** These brackets are very strong and provide load carrying capacity. They will help support the load as well as stabilize the bottom of the rack from moving in and out.



**Galvanized Steel UnderMounts**



**\*\*\*Please NOTE That UnderMounts Are NO LONGER PAINTED BLACK, But Galvanized Steel\*\*\***

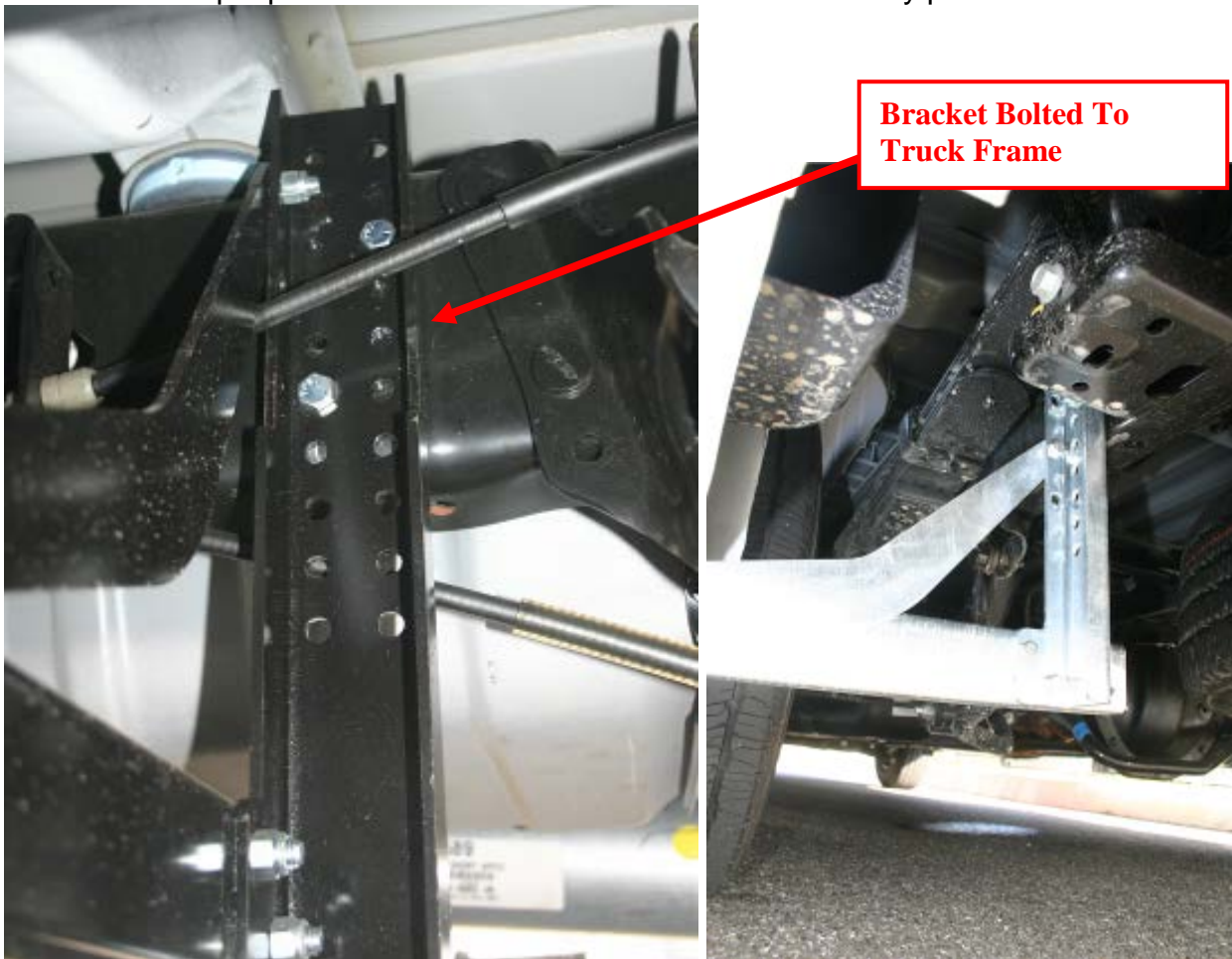
Locate the brackets on the chassis so the horizontal member meets the bottom of the rack angle. **Make sure under mounts do not interfere with anything on glass rack ledge.**

Be sure to use minimum of 2 bolts per bracket through the chassis frame. Get one bolt high and one bolt low on the truck frame. Be careful of brake lines, fuel tanks, fuel hoses etc. The brackets may have to be modified if you have interference. Call us if you are unsure.

Using self tapping 3/8" x 1 1/2" bolts w/ lock washers, nuts (x 6) (Bag N-1 Hardware) bolt the mounting brackets to the truck frame with the long arm of the bracket under the ledge.

**Note: You can use the (2) 1 1/2" x 3/8" bolts with (2) lock nuts, 2 washers x 2 nut at rear frame where it is accessible. (Bag N-1 Hardware) → (Can Be Used Where Applicable)**

Two (2) in front of the rear wheels and One (1) behind. The boomerang shaped support can be located in multiple positions to work around brake cables or body panels.

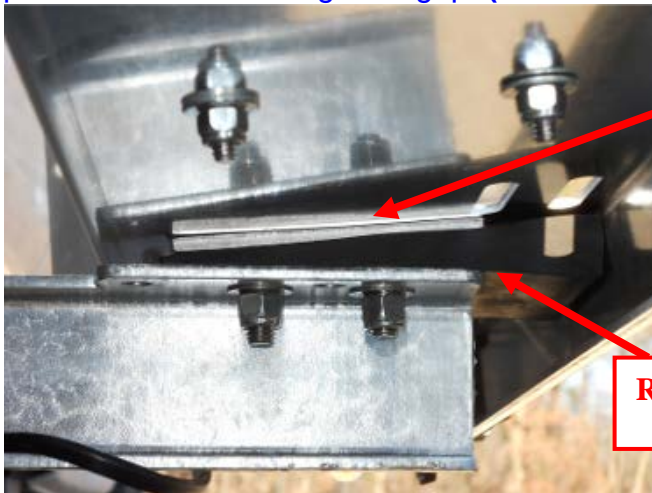


Secure all the bracket bolts.

Since the Nissan body skin sits lower than most standard vehicles, this prevents the under mounts from sitting at a normal height like you would see on a standard cargo van or Sprinter. This causes a gap between the ledge and the under mount.

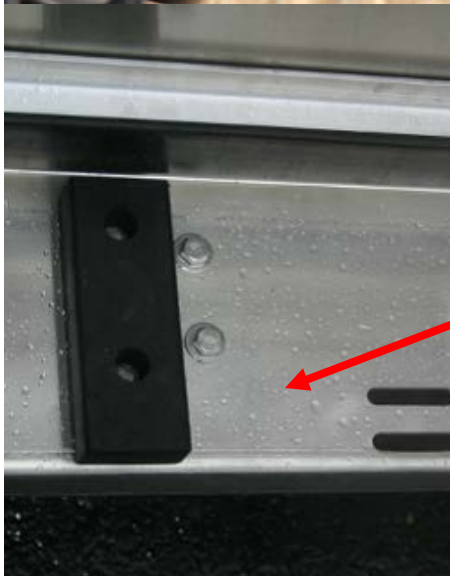
MyGlassTruck.com provides **(x3)** 4 ½" L pole material that will be used to shim the under body mounts to the ledge. Use the provided 3" x 3/8" bolts **(x1)**, washers **(x2)**, lock nuts **(x1)** to secure the ledge to the under mount. **(Bag N-1 Hardware)**

**Optional: (Only use if there is still a slight gap between rack and pole material)**  
Use our 4" x 4" aluminum wear plate between top of bracket and bottom of ledge.  
**(Shrink Wrapped Loose)** If there is a gap between the under mount and the ledge, add provided shims to bridge the gap. **(Shrink Wrapped Loose)**



**Aluminum Wear Plate**

**Rubber Shim**



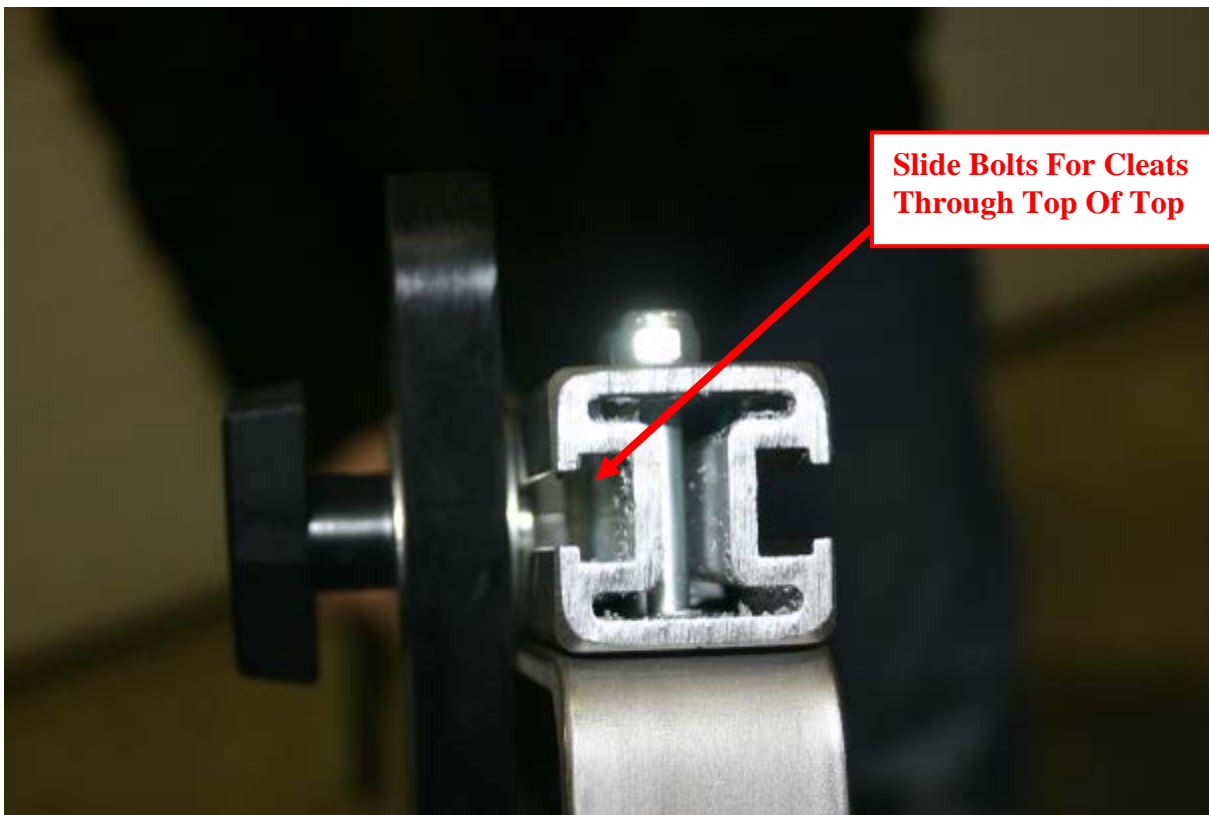
**Make Sure To Watch Out For Ledge Blocks When Bolting UnderMounts To Ledge**

**Double-check all connections, all nuts and all bolts.**

## Poles

**Use Bag N-5 Hardware for this next part. See part list on last page for all available parts involved.**

Locate the triangle cleats. You can slide them onto the poles from the top. The bottom has a stop to prevent the cleats from sliding out. Slide the head of the stainless bolt down the track in the pole. Put 3 cleats on one side and 3 on the other. **(Bag N-5 Hardware)**



**Slide Bolts For Cleats  
Through Top Of Top**



## Loose Front Stop

Use Bag N-6 Hardware for this next part. See part list on last page for all available parts involved.



(2) Bolts need to be drilled into glass rack for Removable Front Stop

MyGlassTruck.com ships the glass rack front stop loose. Use the 2 ½" x 3/8" bolts provided (x 2) in (Bag N-6 Hardware) Bolt the stop directly to the front of the glass rack.



## Non Attached Horizontal Slat

**Use Bag N-4 Hardware for this next part. See part list on last page for all available parts involved.**

Since MyGlassTruck.com can not predict where every fuel door is located, we ship the horizontal slat that would get in the fuel door's way loose. This is so you do not have to make an ugly cut on your rack to access your fuel door.



**Note: Picture shown is not of a van rack, but same principal applies**

Find a good spot either above or below your fuel door to place horizontal slat.

Using 1" x ¼" bolts (**x 10**), washers (**x 20**), nuts (**x 10**) secure the horizontal slat back to glass rack. (**Bag N-4 Hardware**)



We also provide 25" vertical rubber to be placed into missing area (**x 5**). Vertical rubber will need to be cut to size. Size is determined on your desired slat placement.



## FINAL INSPECTION CHECK LIST

- A. (    ) All bolts tight where rack bolts to the van body
- B. (    ) All bolts are tight where the under body mounts secure the rack to the chassis
- C. (    ) All under body mount bolts are tight
- D. (    ) All bolts securing the rack ledge to the under body mounts are tight
- E. (    ) Wheel skirt properly bolted down
- F. (    ) All poles have cleats secured with wing nuts
- G. (    ) Front body stop bolted on securely

**WARRANTY VALID ONLY IF THE FORM BELOW IS COMPLETED AND MAILED BACK WITHIN 15 DAYS OF INSTALLATION.**

**System complete by: (company)-** \_\_\_\_\_

**(installer's name)-** \_\_\_\_\_

**(completion date)-** \_\_\_\_\_

MyGlassTruck.com & Demountable Concepts, Inc. is always looking for ways to improve. Please make some comments to help us improve the Van Rack Installation Instructions.

Fax or Mail Back:

**MyGlassTruck.com**

**Demountable Concepts, Inc.**

200 Acorn Rd.

Glassboro, NJ 08028

800.254.3643

toll free

856.863.0900

phone

856.863.6704

FAX

**COMMENTS:**



**NISSAN NV**

**Standard NV Mounting Hardware**

**Glass Rack Under Body Mount Hardware Bag N-1**

Qty.	Size	Desc.	
6	3/8"	1 1/2"	Zinc self tapping bolt
12	3/8"-16	1"	Hex Cap Screw Stainless
2	3/8"-16	1 1/2"	Hex Cap Screw Stainless
6	3/8"-16	3"	Hex Cap Screw Stainless
20	3/8"-16	3"	Nylon Insert Locknut Plated
20	3/8"		USS Flat Washer Stainless
6	3/8"		Split Lockwasher Stainless

**Rack Rack Mounting**

**Glass Rack Roof Rack Mounting Hardware Bag N-2**

Qty.	Size	Desc.	
12	5/16"-18	2 1/2"	Hex Cap Screw Stainless
12	5/16"-18		Zinc Nyloc Nut
24	5/16"		USS Flat Washer Stainless
3	3/8"-16	2 1/2"	Hex Cap Screw Stainless
6	3/8"		USS Flat Washer Stainless
3	3/8"		Nylon Insert Locknut Plated

3	Roof Rack Bars	Cut to size	64" or 71"
3	Stainless Roof rack mount sets SHORT (1 open, 1 closed)		

**Attached to angle and Pre-Assembled**

**Rack Rack Mounting**

**Glass Rack Roof Rack Mounting Hardware Bag N-3**

Qty.	Size	Desc.	
16	3/4"	1/4"	McMaster Carr Part # 3259T32 6
16	1/4"	1"	Zinc Bolts
32	1/4"	1"	Zinc Washers
16	1/4"	1"	Zinc Loc Washers

0

**Glass Rack Loose Fuel Slat Hardware Bag N-4**

Qty.	Size	Desc.	
10	1/4"-20	1"	Hex Cap Screw Stainless
10	1/4"-20		Nylon Insert Locknut Plated
20	1/4"-20		USS Flat Washer Stainless

**Miscellaneous Parts**

Qty.	Desc.
3	Under body Mount 3 piece kits 3 PCS
3	Rubber wedge
3	4" x 4" x 3/16" aluminum shim
5	25" Vertical rubber
15	Cleats
3	4 1/2" L Pole Material for Shimming UnderMounts

**Triangle Cleat Hardware (Standard 3 Poles 6 Cleat List)**

**Glass Rack T-6 Adjust-a-Pole Hardware Bag N-5**

18	Wing nuts		
18	3/8"	1 1/2"	Hex Cap Screw stainless
36	3/8"	1 1/2"	Stainless Fender washer

**Loose Front Stop**

**Glass Rack Loose Front Stop Hardware N-6**

2	3/8"-16	2 1/2"	Hex Cap Screw Stainless
4	3/8"		USS Flat Washer Stainless
2	3/8"		Nylon Insert Locknut Plated

**Items Loose In Crate**

1	Aluminum Poles		
	Loose fuel slat with rubber		